



ELECTRONIC COPY

LG667449661
Report verification at igi.org



December 18, 2024
IGI Report Number **LG667449661**
Description **LABORATORY GROWN DIAMOND**
Shape and Cutting Style **CUT CORNERED
RECTANGULAR MODIFIED
BRILLIANT**
Measurements **8.77 X 6.37 X 4.34 MM**
GRADING RESULTS
Carat Weight **2.15 CARATS**
Color Grade **FANCY INTENSE PINK**
Clarity Grade **VS 2**

December 18, 2024
IGI Report Number **LG667449661**
Description **LABORATORY GROWN DIAMOND**
Shape and Cutting Style **CUT CORNERED RECTANGULAR
MODIFIED BRILLIANT**
Measurements **8.77 X 6.37 X 4.34 MM**

GRADING RESULTS

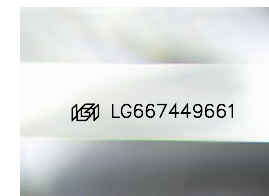
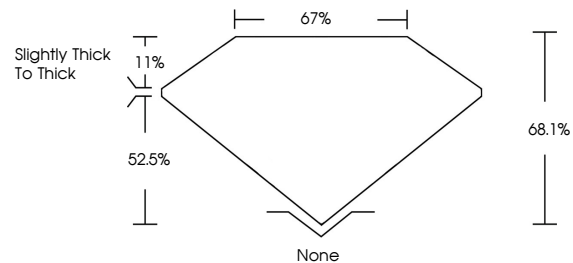
Carat Weight **2.15 CARATS**
Color Grade **FANCY INTENSE PINK**
Clarity Grade **VS 2**

ADDITIONAL GRADING INFORMATION

Polish **EXCELLENT**
Symmetry **EXCELLENT**
Fluorescence **SLIGHT**
Inscription(s) **IGI LG667449661**

Comments: This Laboratory Grown Diamond was created by Chemical Vapor Deposition (CVD) growth process. Indications of post-growth treatment.

PROPORTIONS



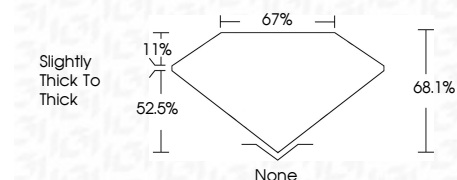
Sample Image Used

COLOR

D E F G H I J Faint Very Light Light

CLARITY

IF	VS ¹⁻²	VS ¹⁻²	SI ¹⁻²	I ¹⁻³
Internally Flawless	Very Very Slightly Included	Very Slightly Included	Slightly Included	Included



ADDITIONAL GRADING INFORMATION

Polish **EXCELLENT**
Symmetry **EXCELLENT**
Fluorescence **SLIGHT**
Inscription(s) **IGI LG667449661**
Comments: This Laboratory Grown Diamond was created by Chemical Vapor Deposition (CVD) growth process. Indications of post-growth treatment.



December 18, 2024
IGI Report No. LG667449661
CUT CORNERED RECT. MODIFIED BRILLIANT
8.77 X 6.37 X 4.34 MM
2.15 CARATS
FANCY INTENSE PINK
VS 2
68.1%
67%
Slightly thick to thick
None
EXCELLENT
EXCELLENT
SLIGHT
IGI LG667449661
Comments: This Laboratory Grown Diamond was created by Chemical Vapor Deposition (CVD) growth process. Indications of post-growth treatment.