



**ELECTRONIC COPY**

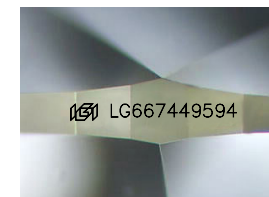
LG667449594  
Report verification at igi.org



December 6, 2024  
IGI Report Number **LG667449594**  
Description **LABORATORY GROWN DIAMOND**

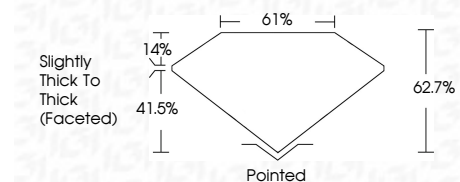
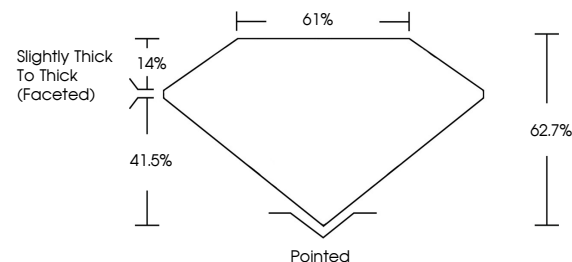
Shape and Cutting Style **PEAR MODIFIED BRILLIANT**  
Measurements **9.15 X 5.52 X 3.46 MM**

**GRADING RESULTS**  
Carat Weight **1.22 CARAT**  
Color Grade **FANCY VIVID YELLOW**  
Clarity Grade **VS 1**

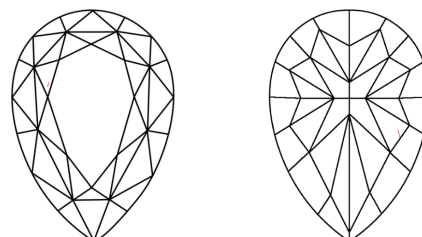


Sample Image Used

**PROPORTIONS**



**CLARITY CHARACTERISTICS**



**KEY TO SYMBOLS**

Red symbols indicate internal characteristics.  
Green symbols indicate external characteristics.

**COLOR**

D E F G H I J Faint Very Light Light

**CLARITY**

IF	VS <sup>1-2</sup>	VS <sup>1-2</sup>	SI <sup>1-2</sup>	I <sup>1-3</sup>
Internally Flawless	Very Very Slightly Included	Very Slightly Included	Slightly Included	Included

**ADDITIONAL GRADING INFORMATION**

Polish **EXCELLENT**  
Symmetry **EXCELLENT**  
Fluorescence **NONE**  
Inscription(s) **IGI LG667449594**  
Comments: This Laboratory Grown Diamond was created by Chemical Vapor Deposition (CVD) growth process.



**IGI**



December 6, 2024  
IGI Report No **LG667449594**  
**PEAR MODIFIED BRILLIANT**  
9.15 X 5.52 X 3.46 MM  
Carat Weight **1.22 CARAT**  
Color Grade **FANCY VIVID YELLOW**  
Clarity Grade **VS 1**  
Depth **62.7%**  
Table **61%**  
Girdle **Slightly Thick To Thick (Faceted)**  
Culet **Pointed**  
Polish **EXCELLENT**  
Symmetry **EXCELLENT**  
Fluorescence **NONE**  
Inscription(s) **IGI LG667449594**  
Comments: This Laboratory Grown Diamond was created by Chemical Vapor Deposition (CVD) growth process.