



ELECTRONIC COPY

LG667444325
Report verification at igi.org



November 30, 2024
IGI Report Number LG667444325
Description LABORATORY GROWN DIAMOND
Shape and Cutting Style PRINCESS CUT
Measurements 8.92 X 8.57 X 5.97 MM
GRADING RESULTS
Carat Weight 4.08 CARATS
Color Grade F
Clarity Grade VVS 2

LABORATORY GROWN DIAMOND REPORT

November 30, 2024
IGI Report Number LG667444325
Description LABORATORY GROWN DIAMOND
Shape and Cutting Style PRINCESS CUT
Measurements 8.92 X 8.57 X 5.97 MM

GRADING RESULTS

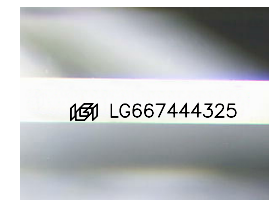
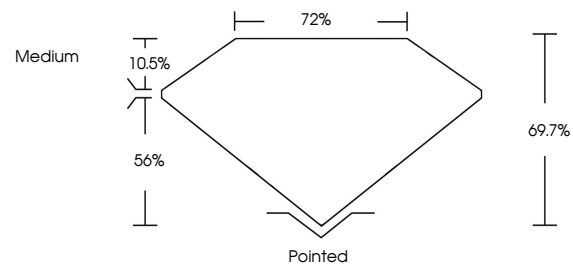
Carat Weight 4.08 CARATS
Color Grade F
Clarity Grade VVS 2

ADDITIONAL GRADING INFORMATION

Polish EXCELLENT
Symmetry EXCELLENT
Fluorescence NONE
Inscription(s) IGI LG667444325

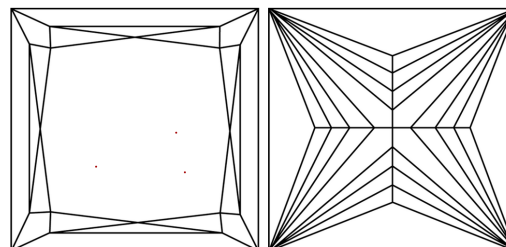
Comments: This Laboratory Grown Diamond was created by Chemical Vapor Deposition (CVD) growth process. Type IIa

PROPORTIONS



Sample Image Used

CLARITY CHARACTERISTICS



KEY TO SYMBOLS

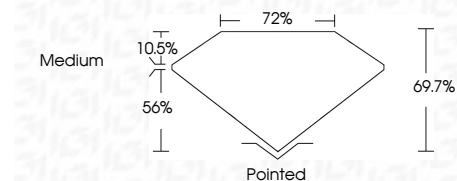
Red symbols indicate internal characteristics.
Green symbols indicate external characteristics.

COLOR

D E F G H I J Faint Very Light Light

CLARITY

IF VVS 1-2 VS 1-2 SI 1-2 I 1-3
Internally Flawless Very Very Slightly Included Very Slightly Included Slightly Included Included



ADDITIONAL GRADING INFORMATION

Polish EXCELLENT
Symmetry EXCELLENT
Fluorescence NONE
Inscription(s) IGI LG667444325
Comments: This Laboratory Grown Diamond was created by Chemical Vapor Deposition (CVD) growth process. Type IIa



November 30, 2024
IGI Report No LG667444325
PRINCESS CUT
4.08 CARATS F
8.92 X 8.57 X 5.97 MM
Carat Weight VVS 2
Color Grade F
Clarity Grade 69.7%
Depth 72%
Table Medium
Girdle Pointed
Culet EXCELLENT
Polish EXCELLENT
Symmetry NONE
Fluorescence IGI LG667444325
Inscription(s)
Comments: This Laboratory Grown Diamond was created by Chemical Vapor Deposition (CVD) growth process. Type IIa