



ELECTRONIC COPY

LG667442215
Report verification at igi.org



December 2, 2024

IGI Report Number **LG667442215**

Description **LABORATORY GROWN DIAMOND**

Shape and Cutting Style **EMERALD CUT**

Measurements **12.09 X 8.53 X 5.72 MM**

GRADING RESULTS

Carat Weight **5.72 CARATS**

Color Grade **F**

Clarity Grade **SI 1**

December 2, 2024
IGI Report Number **LG667442215**
Description **LABORATORY GROWN DIAMOND**
Shape and Cutting Style **EMERALD CUT**
Measurements **12.09 X 8.53 X 5.72 MM**

GRADING RESULTS

Carat Weight **5.72 CARATS**

Color Grade **F**

Clarity Grade **SI 1**

ADDITIONAL GRADING INFORMATION

Polish **EXCELLENT**

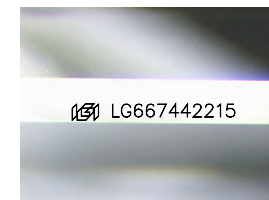
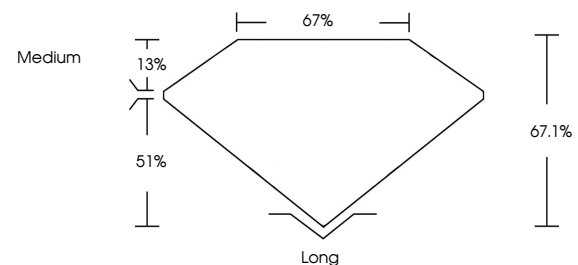
Symmetry **EXCELLENT**

Fluorescence **NONE**

Inscription(s) **IGI LG667442215**

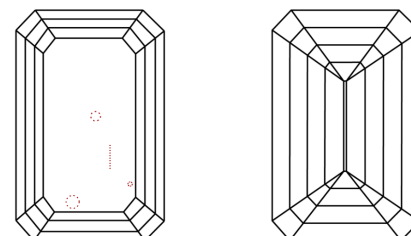
Comments: This Laboratory Grown Diamond was created by Chemical Vapor Deposition (CVD) growth process. Type IIa

PROPORTIONS



Sample Image Used

CLARITY CHARACTERISTICS



KEY TO SYMBOLS

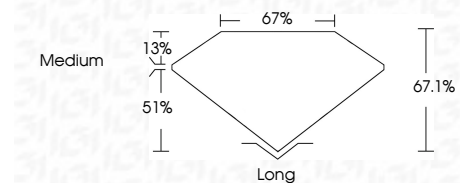
Red symbols indicate internal characteristics.
Green symbols indicate external characteristics.

COLOR

D E F G H I J Faint Very Light Light

CLARITY

IF	VS ¹⁻²	VS ¹⁻²	SI ¹⁻²	I ¹⁻³
Internally Flawless	Very Very Slightly Included	Very Slightly Included	Slightly Included	Included



ADDITIONAL GRADING INFORMATION

Polish **EXCELLENT**

Symmetry **EXCELLENT**

Fluorescence **NONE**

Inscription(s) **IGI LG667442215**

Comments: This Laboratory Grown Diamond was created by Chemical Vapor Deposition (CVD) growth process. Type IIa



IGI



December 2, 2024
IGI Report No LG667442215
EMERALD CUT
12.09 X 8.53 X 5.72 MM
5.72 CARATS
F
SI 1
51%
67%
Medium
Long
EXCELLENT
EXCELLENT
NONE
IGI LG667442215
Comments: This Laboratory Grown Diamond was created by Chemical Vapor Deposition (CVD) growth process. Type IIa