



INTERNATIONAL GEMOLOGICAL INSTITUTE

LABORATORY GROWN DIAMOND REPORT

December 2, 2024

IGI Report Number

LG667440819

Description

LABORATORY GROWN DIAMOND

Shape and Cutting Style

PRINCESS CUT

Measurements

5.42 X 5.27 X 3.68 MM

GRADING RESULTS

Carat Weight

0.92 CARAT

Color Grade

E

Clarity Grade

VS 1

ADDITIONAL GRADING INFORMATION

Polish

EXCELLENT

Symmetry

EXCELLENT

Fluorescence

NONE

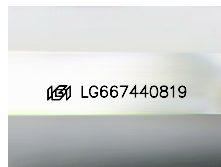
Inscription(s)

IGI LG667440819

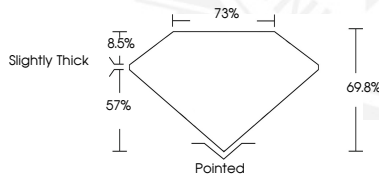
Comments: This Laboratory Grown Diamond was created by Chemical Vapor Deposition (CVD) growth process. Type IIa

ELECTRONIC COPY

LG667440819



Sample Image Used



December 2, 2024

IGI Report Number LG667440819

PRINCESS CUT

LABORATORY GROWN DIAMOND

5.42 X 5.27 X 3.68 MM

Carat Weight 0.92 CARAT

Color Grade E

Clarity Grade VS 1

Polish EXCELLENT

Symmetry EXCELLENT

Fluorescence NONE

Inscription(s) IGI LG667440819

Comments: This Laboratory Grown Diamond was created by Chemical Vapor Deposition (CVD) growth process. Type IIa



December 2, 2024

IGI Report Number LG667440819

PRINCESS CUT

LABORATORY GROWN DIAMOND

5.42 X 5.27 X 3.68 MM

Carat Weight 0.92 CARAT

Color Grade E

Clarity Grade VS 1

Polish EXCELLENT

Symmetry EXCELLENT

Fluorescence NONE

Inscription(s) IGI LG667440819

Comments: This Laboratory Grown Diamond was created by Chemical Vapor Deposition (CVD) growth process. Type IIa



THIS DOCUMENT WAS PRODUCED WITH THE FOLLOWING SECURITY MEASURES: SPECIAL DOCUMENT PAPER, INK SCREENS, WATERMARK, BACKGROUND DESIGNS, HOLOGRAM AND OTHER SECURITY FEATURES NOT LISTED AND DO EXCEED DOCUMENT SECURITY INDUSTRY GUIDELINES.

For terms & conditions and to verify this report, please visit www.igi.org