



**ELECTRONIC COPY**

LG667438949  
Report verification at igi.org



December 24, 2024  
IGI Report Number **LG667438949**  
Description **LABORATORY GROWN DIAMOND**  
Shape and Cutting Style **CUT CORNERED  
RECTANGULAR MODIFIED  
BRILLIANT**  
Measurements **8.76 X 6.31 X 4.32 MM**  
**GRADING RESULTS**  
Carat Weight **2.27 CARATS**  
Color Grade **FANCY INTENSE YELLOW**  
Clarity Grade **VS 1**

December 24, 2024  
IGI Report Number **LG667438949**  
Description **LABORATORY GROWN DIAMOND**  
Shape and Cutting Style **CUT CORNERED RECTANGULAR  
MODIFIED BRILLIANT**  
Measurements **8.76 X 6.31 X 4.32 MM**

**GRADING RESULTS**

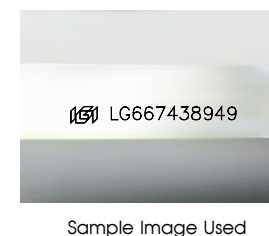
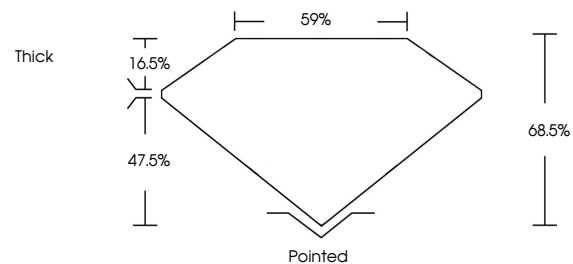
Carat Weight **2.27 CARATS**  
Color Grade **FANCY INTENSE YELLOW**  
Clarity Grade **VS 1**

**ADDITIONAL GRADING INFORMATION**

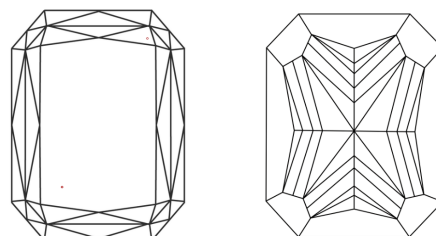
Polish **EXCELLENT**  
Symmetry **EXCELLENT**  
Fluorescence **NONE**  
Inscription(s) **IGI LG667438949**

Comments: This Laboratory Grown Diamond was created by Chemical Vapor Deposition (CVD) growth process.

**PROPORTIONS**



**CLARITY CHARACTERISTICS**



**KEY TO SYMBOLS**

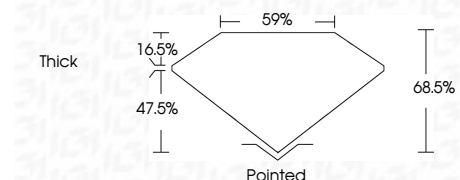
Red symbols indicate internal characteristics.  
Green symbols indicate external characteristics.

**COLOR**

D E F G H I J Faint Very Light Light

**CLARITY**

IF	VS <sup>1-2</sup>	VS <sup>1-2</sup>	SI <sup>1-2</sup>	I <sup>1-3</sup>
Internally Flawless	Very Very Slightly Included	Very Slightly Included	Slightly Included	Included



**ADDITIONAL GRADING INFORMATION**

Polish **EXCELLENT**  
Symmetry **EXCELLENT**  
Fluorescence **NONE**  
Inscription(s) **IGI LG667438949**  
Comments: This Laboratory Grown Diamond was created by Chemical Vapor Deposition (CVD) growth process.



**IGI**



December 24, 2024  
IGI Report No. LG667438949  
CUT CORNERED RECT. MODIFIED BRILLIANT  
8.76 X 6.31 X 4.32 MM  
2.27 CARATS  
FANCY INTENSE YELLOW  
VS 1  
68.5%  
59%  
Thick  
Pointed  
EXCELLENT  
EXCELLENT  
NONE  
IGI LG667438949

Comments: This Laboratory Grown Diamond was created by Chemical Vapor Deposition (CVD) growth process.