



ELECTRONIC COPY

LG667436419
Report verification at igi.org



December 4, 2024
IGI Report Number **LG667436419**
Description **LABORATORY GROWN DIAMOND**
Shape and Cutting Style **CUSHION MODIFIED BRILLIANT**
Measurements **8.94 X 6.71 X 4.88 MM**
GRADING RESULTS
Carat Weight **2.80 CARATS**
Color Grade **FANCY INTENSE BROWNISH PINK**
Clarity Grade **VVS 2**

LABORATORY GROWN DIAMOND REPORT

December 4, 2024
IGI Report Number **LG667436419**
Description **LABORATORY GROWN DIAMOND**
Shape and Cutting Style **CUSHION MODIFIED BRILLIANT**
Measurements **8.94 X 6.71 X 4.88 MM**

GRADING RESULTS

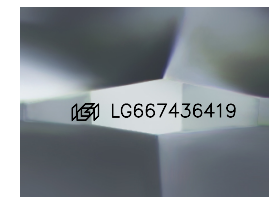
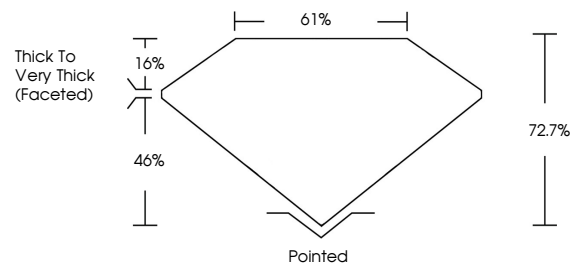
Carat Weight **2.80 CARATS**
Color Grade **FANCY INTENSE BROWNISH PINK**
Clarity Grade **VVS 2**

ADDITIONAL GRADING INFORMATION

Polish **EXCELLENT**
Symmetry **VERY GOOD**
Fluorescence **SLIGHT**
Inscription(s) **IGI LG667436419**

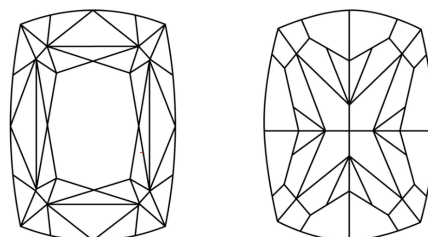
Comments: This Laboratory Grown Diamond was created by Chemical Vapor Deposition (CVD) growth process. Indications of post-growth treatment.

PROPORTIONS



Sample Image Used

CLARITY CHARACTERISTICS



KEY TO SYMBOLS

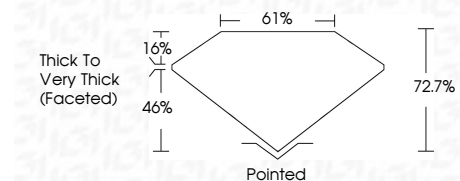
Red symbols indicate internal characteristics.
Green symbols indicate external characteristics.

COLOR

D E F G H I J Faint Very Light Light

CLARITY

IF	VS ¹⁻²	VS ¹⁻²	SI ¹⁻²	I ¹⁻³
Internally Flawless	Very Very Slightly Included	Very Slightly Included	Slightly Included	Included



ADDITIONAL GRADING INFORMATION

Polish **EXCELLENT**
Symmetry **VERY GOOD**
Fluorescence **SLIGHT**
Inscription(s) **IGI LG667436419**
Comments: This Laboratory Grown Diamond was created by Chemical Vapor Deposition (CVD) growth process. Indications of post-growth treatment.



December 4, 2024
IGI Report No LG667436419
CUSHION MODIFIED BRILLIANT
8.94 X 6.71 X 4.88 MM
2.80 CARATS
Carat Weight
Color Grade **FANCY INTENSE BROWNISH PINK**
Clarity Grade **VVS 2**
Depth **72.7%**
Table **61%**
Girdle
Thick to Very Thick (Faceted)
Culet Pointed
Polish **EXCELLENT**
Symmetry **VERY GOOD**
Fluorescence **SLIGHT**
Inscription(s) **IGI LG667436419**
Comments: This Laboratory Grown Diamond was created by Chemical Vapor Deposition (CVD) growth process. Indications of post-growth treatment.