



**ELECTRONIC COPY**

LG667431599  
Report verification at igi.org



December 4, 2024  
IGI Report Number **LG667431599**  
Description **LABORATORY GROWN DIAMOND**  
Shape and Cutting Style **CUT CORNERED  
RECTANGULAR MODIFIED  
BRILLIANT**  
Measurements **7.03 X 4.65 X 3.39 MM**  
**GRADING RESULTS**  
Carat Weight **1.05 CARAT**  
Color Grade **FANCY YELLOW**  
Clarity Grade **VS 1**

December 4, 2024  
IGI Report Number **LG667431599**  
Description **LABORATORY GROWN DIAMOND**  
Shape and Cutting Style **CUT CORNERED RECTANGULAR  
MODIFIED BRILLIANT**  
Measurements **7.03 X 4.65 X 3.39 MM**

**GRADING RESULTS**

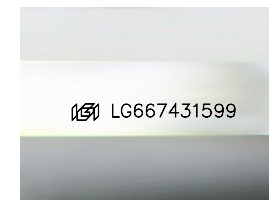
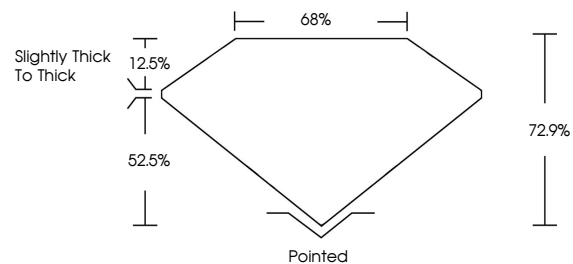
Carat Weight **1.05 CARAT**  
Color Grade **FANCY YELLOW**  
Clarity Grade **VS 1**

**ADDITIONAL GRADING INFORMATION**

Polish **EXCELLENT**  
Symmetry **VERY GOOD**  
Fluorescence **NONE**  
Inscription(s) **IGI LG667431599**

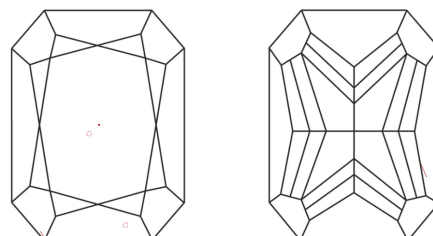
Comments: This Laboratory Grown Diamond was created by Chemical Vapor Deposition (CVD) growth process.

**PROPORTIONS**



Sample Image Used

**CLARITY CHARACTERISTICS**



**KEY TO SYMBOLS**

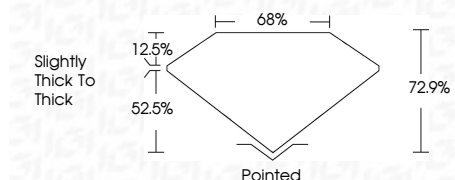
Red symbols indicate internal characteristics.  
Green symbols indicate external characteristics.

**COLOR**

D E F G H I J Faint Very Light Light

**CLARITY**

IF	VS <sup>1-2</sup>	VS <sup>1-2</sup>	SI <sup>1-2</sup>	I <sup>1-3</sup>
Internally Flawless	Very Very Slightly Included	Very Slightly Included	Slightly Included	Included



**ADDITIONAL GRADING INFORMATION**

Polish **EXCELLENT**  
Symmetry **VERY GOOD**  
Fluorescence **NONE**  
Inscription(s) **IGI LG667431599**  
Comments: This Laboratory Grown Diamond was created by Chemical Vapor Deposition (CVD) growth process.



**IGI**



December 4, 2024  
IGI Report No LG667431599  
CUT CORNERED RECT. MODIFIED BRILLIANT  
7.03 X 4.65 X 3.39 MM  
1.05 CARAT  
FANCY YELLOW  
VS 1  
72.9%  
68%  
Slightly Thick To Thick  
Pointed  
EXCELLENT  
VERY GOOD  
NONE  
IGI LG667431599  
Comments: This Laboratory Grown Diamond was created by Chemical Vapor Deposition (CVD) growth process.