



ELECTRONIC COPY

LG667430021
Report verification at igi.org



December 4, 2024
IGI Report Number **LG667430021**
Description **LABORATORY GROWN DIAMOND**
Shape and Cutting Style **SQUARE CUSHION MODIFIED BRILLIANT**
Measurements **8.56 X 8.38 X 5.64 MM**
GRADING RESULTS
Carat Weight **3.93 CARATS**
Color Grade **FANCY VIVID PINK**
Clarity Grade **VS 1**

LABORATORY GROWN DIAMOND REPORT

December 4, 2024
IGI Report Number **LG667430021**
Description **LABORATORY GROWN DIAMOND**
Shape and Cutting Style **SQUARE CUSHION MODIFIED BRILLIANT**
Measurements **8.56 X 8.38 X 5.64 MM**

GRADING RESULTS

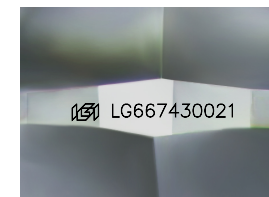
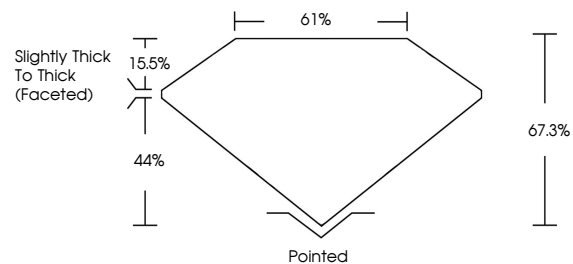
Carat Weight **3.93 CARATS**
Color Grade **FANCY VIVID PINK**
Clarity Grade **VS 1**

ADDITIONAL GRADING INFORMATION

Polish **EXCELLENT**
Symmetry **EXCELLENT**
Fluorescence **SLIGHT**
Inscription(s) **IGI LG667430021**

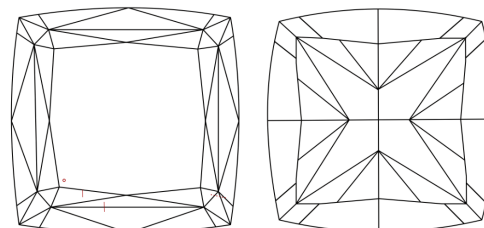
Comments: This Laboratory Grown Diamond was created by Chemical Vapor Deposition (CVD) growth process. Indications of post-growth treatment.

PROPORTIONS



Sample Image Used

CLARITY CHARACTERISTICS



KEY TO SYMBOLS

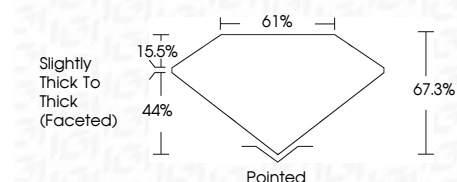
Red symbols indicate internal characteristics.
Green symbols indicate external characteristics.

COLOR

D E F G H I J Faint Very Light Light

CLARITY

IF	VS ¹⁻²	VS ¹⁻²	SI ¹⁻²	I ¹⁻³
Internally Flawless	Very Very Slightly Included	Very Slightly Included	Slightly Included	Included



ADDITIONAL GRADING INFORMATION

Polish **EXCELLENT**
Symmetry **EXCELLENT**
Fluorescence **SLIGHT**
Inscription(s) **IGI LG667430021**
Comments: This Laboratory Grown Diamond was created by Chemical Vapor Deposition (CVD) growth process. Indications of post-growth treatment.



December 4, 2024
IGI Report No LG667430021
SQUARE CUSHION MODIFIED BRILLIANT
8.56 X 8.38 X 5.64 MM
3.93 CARATS
FANCY VIVID PINK
VS 1
67.3%
61%
Slightly Thick To Thick (Faceted)
Pointed
EXCELLENT
EXCELLENT
SLIGHT
IGI LG667430021
Comments: This Laboratory Grown Diamond was created by Chemical Vapor Deposition (CVD) growth process. Indications of post-growth treatment.