



ELECTRONIC COPY

LABORATORY GROWN DIAMOND REPORT

| | |
|-------------------------|--------------------------|
| November 29, 2024 | |
| IGI Report Number | LG667426528 |
| Description | LABORATORY GROWN DIAMOND |
| Shape and Cutting Style | MARQUISE BRILLIANT |
| Measurements | 12.92 X 6.62 X 4.03 MM |

GRADING RESULTS

| | |
|---------------|------------|
| Carat Weight | 1.98 CARAT |
| Color Grade | D |
| Clarity Grade | VS 1 |

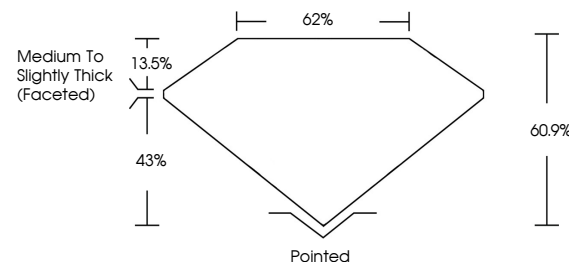
ADDITIONAL GRADING INFORMATION

| | |
|----------------|-----------------|
| Polish | EXCELLENT |
| Symmetry | EXCELLENT |
| Fluorescence | NONE |
| Inscription(s) | 151 LG667426528 |

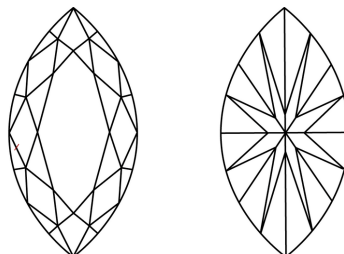
Comments: This Laboratory Grown Diamond was created by Chemical Vapor Deposition (CVD) growth process.
Type IIa

LG667426528
Report verification at lgi.org

PROPORTIONS



CLARITY CHARACTERISTICS



KEY TO SYMBOLS

Red symbols indicate internal characteristics.
Green symbols indicate external characteristics.



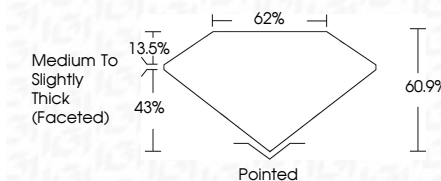
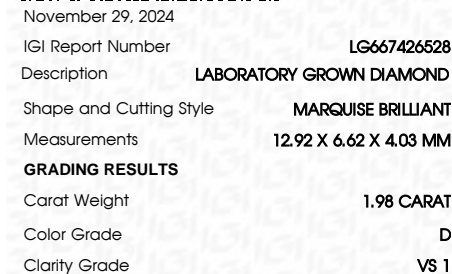
COLOR

D E F G H I J Faint Very Light Light

CLARITY

| IF | VS ¹⁻² | VS ¹⁻² | SI ¹⁻² | I ¹⁻³ |
|---------------------|-----------------------------|------------------------|-------------------|------------------|
| Internally Flawless | Very Very Slightly Included | Very Slightly Included | Slightly Included | Included |

LABORATORY GROWN DIAMOND REPORT



ADDITIONAL GRADING INFORMATION

| | |
|---|--|
| Polish | EXCELLENT |
| Symmetry | EXCELLENT |
| Fluorescence | NONE |
| Inscription(s) |  LG667426528 |
| <p>Comments: This Laboratory Grown Diamond was created by Chemical Vapor Deposition (CVD) growth process.</p> <p>Type IIa</p> | |



© IGI 2020, International Gemological Institute

FD - 10 20

www.igi.org

THIS DOCUMENT WAS PRODUCED WITH THE FOLLOWING SECURITY MEASURES: SPECIAL DOCUMENT PAPER, INK SCREENS, WATERMARK BACKGROUND DESIGNS, HOLOGRAM AND OTHER SECURITY FEATURES NOT LISTED AND DO EXCEED DOCUMENT SECURITY INDUSTRY GUIDELINES

| | |
|--------------------------|------------------------------------|
| November 29, 2024 | 1.98 CARAT |
| GJ Report No LG567426528 | D |
| MARQUESE BRILLIANT | VS 1 |
| | 60.1% |
| | 62% |
| 2.92 x 5.42 x 4.03 MM | Medium to Slightly Thick (Faceted) |
| Carat Weight | Pointed |
| Color Grade | EXCELLENT |
| Clarity Grade | EXCELLENT |
| Depth | NONE |
| Table | 881 LG567426528 |
| Proportions | |
| Fluorescence | |
| Inscriptions(s) | |
| Color | |
| Polish | |
| Symmetry | |

Comments: Very Gray Diamond was created by Chemical Vapor Deposition (CVD) growth process.

Type IIA