



ELECTRONIC COPY

LABORATORY GROWN DIAMOND REPORT

November 27, 2024

IGI Report Number **LG667416459**

Description	LABORATORY GROWN DIAMOND
-------------	--------------------------

Shape and Cutting Style **CUSHION MODIFIED BRILLIANT**

Measurements 7.65 X 5.70 X 3.88 MM

GRADING RESULTS

Carat Weight 1.23 CARAT

Color Grade D

Clarity Grade WS 2

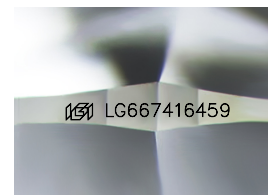
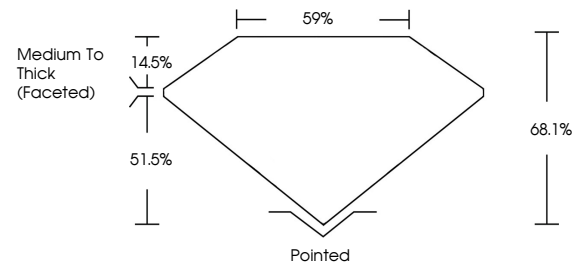
ADDITIONAL GRADING INFORMATION

Polish **EXCELLENT**Symmetry **EXCELLENT**Fluorescence **NONE**Inscription(s)  LG667416459

Comments: This Laboratory Grown Diamond was created by Chemical Vapor Deposition (CVD) growth process.
Type IIa

LG667416459
Report verification at igi.org

PROPORTIONS



Sample Image Used

COLOR

D E F G H I J Faint Very Light Light

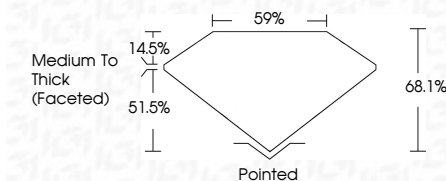
CLARITY

IF	VS ¹⁻²	VS ¹⁻²	SI ¹⁻²	I ¹⁻³
Internally Flawless	Very Very Slightly Included	Very Slightly Included	Slightly Included	Included

LABORATORY GROWN DIAMOND REPORT



November 27, 2024	
IGI Report Number	LG667416459
Description	LABORATORY GROWN DIAMOND
Shape and Cutting Style	CUSHION MODIFIED BRILLIANT
Measurements	7.65 X 5.70 X 3.88 MM
GRADING RESULTS	
Carat Weight	1.23 CARAT
Color Grade	D
Clarity Grade	VVS 2



ADDITIONAL GRADING INFORMATION

Polish	EXCELLENT
Symmetry	EXCELLENT
Fluorescence	NONE
Inscription(s)	 LG667416459
<p>Comments: This Laboratory Grown Diamond was created by Chemical Vapor Deposition (CVD) growth process.</p> <p>Type IIa</p>	



© IGI 2020, International Gemological Institute

FD - 10 20



THIS DOCUMENT WAS PRODUCED WITH THE FOLLOWING SECURITY MEASURES: SPECIAL DOCUMENT PAPER, INK SCREENS, WATERMARK, BACKGROUND DESIGNS, HOLOGRAM AND OTHER SECURITY FEATURES NOT LISTED AND DO EXCEED DOCUMENT SECURITY INDUSTRY GUIDELINES

www.igi.org



November 27, 2024
GI Report No LG667416459
VISION MODIFIED BRILLIANT

1.25 CARAT	D
VS2	68.1%
59%	Medium to Thick (faceted)
Pointed	EXCELLENT
EXCELLENT	EXCELLENT
NONE	None
gem/1.2457/1.6492	

Comments:
This Laboratory Grown Diamond was created by Chemical Vapor Deposition (CVD) growth process.