



**ELECTRONIC COPY**

## LABORATORY GROWN DIAMOND REPORT

November 28, 2024	
IGI Report Number	LG666446609
Description	LABORATORY GROWN DIAMOND
Shape and Cutting Style	CUT CORNERED RECTANGULAR MODIFIED BRILLIANT
Measurements	8.31 X 5.78 X 3.92 MM

## GRADING RESULTS

Carat Weight	1.59 CARAT
Color Grade	E
Clarity Grade	VS2

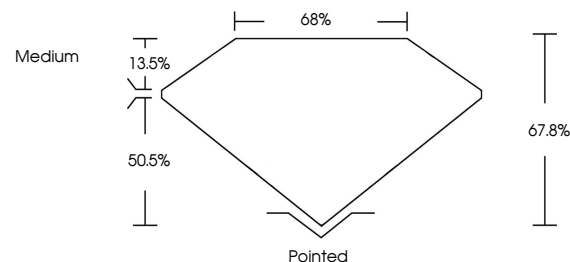
### ADDITIONAL GRADING INFORMATION

Polish	EXCELLENT
Symmetry	EXCELLENT
Fluorescence	NONE
Inscription(s)	LG666446609

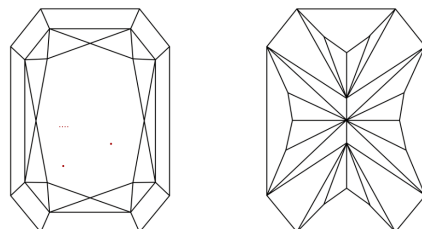
Comments: This Laboratory Grown Diamond was created by Chemical Vapor Deposition (CVD) growth process.  
Type IIa

LG666446609  
Report verification at [lgi.org](https://lgi.org)

## PROPORTIONS

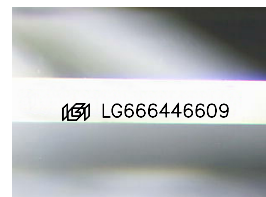


## CLARITY CHARACTERISTICS



### KEY TO SYMBOLS

Red symbols indicate internal characteristics.  
Green symbols indicate external characteristics.



Sample Image Used

## COLOR

D E F G H I J Faint Very Light Light

## CLARITY

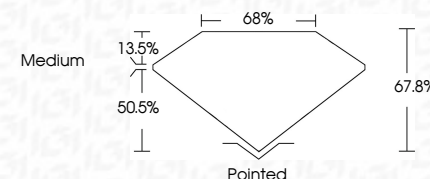
IF      VWS<sup>1-2</sup>      VS<sup>1-2</sup>      SI<sup>1-2</sup>      I<sup>1-3</sup>

Internally Flawless	Very Very Slightly Included	Very Slightly Included	Slightly Included	Included
------------------------	--------------------------------	---------------------------	----------------------	----------

## LABORATORY GROWN DIAMOND REPORT



November 28, 2024	
IGI Report Number	LG666446609
Description	LABORATORY GROWN DIAMOND
Shape and Cutting Style	CUT CORNERED RECTANGULAR MODIFIED BRILLIANT
Measurements	8.31 X 5.78 X 3.92 MM
GRADING RESULTS	
Carat Weight	1.59 CARAT
Color Grade	E
Clarity Grade	VVS 2



### ADDITIONAL GRADING INFORMATION

Polish	EXCELLENT
Symmetry	EXCELLENT
Fluorescence	NONE
Inscription(s)	 LG666446609
<p>Comments: This Laboratory Grown Diamond was created by Chemical Vapor Deposition (CVD) growth process.</p> <p>Type IIa</p>	



© IGI 2020, International Gemological Institute

FD - 10 20

**www.igi.org**

THIS DOCUMENT WAS PRODUCED WITH THE FOLLOWING SECURITY MEASURES: SPECIAL DOCUMENT PAPER, INK SCREENS, WATERMARK, BACKGROUND DESIGNS, HOLOGRAM AND OTHER SECURITY FEATURES NOT LISTED AND DO EXCEED DOCUMENT SECURITY INDUSTRY GUIDELINE

November 28, 2024	GI Report No LG56446509	CU CORNERED RECT. MODIFIED BRILLIANT
1.55 CARAT	Color Grade	Clarity Grade
E		
VVS 2	Depth	
67.8%	Table	
68%	Gable	
Medium		
Pointed	Quiet	
EXCELLENT	Polish	
EXCELLENT	Symmetry	
NONE	Fluorescence	
	Inscriptions(s)	
1881 LG56446509		

Comments: This Fancy Green Diamond was created by Chemical Vapor Deposition (CVD) growth process.

Type IIa