



**ELECTRONIC COPY**

LG666444245  
Report verification at igi.org



November 29, 2024

IGI Report Number **LG666444245**

Description **LABORATORY GROWN DIAMOND**

Shape and Cutting Style **BAGUETTE**

Measurements **12.31 X 6.04 X 3.87 MM**

**GRADING RESULTS**

Carat Weight **3.30 CARATS**

Color Grade **G**

Clarity Grade **VS 1**

November 29, 2024  
IGI Report Number **LG666444245**  
Description **LABORATORY GROWN DIAMOND**  
Shape and Cutting Style **BAGUETTE**  
Measurements **12.31 X 6.04 X 3.87 MM**

**GRADING RESULTS**

Carat Weight **3.30 CARATS**

Color Grade **G**

Clarity Grade **VS 1**

**ADDITIONAL GRADING INFORMATION**

Polish **EXCELLENT**

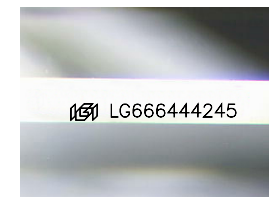
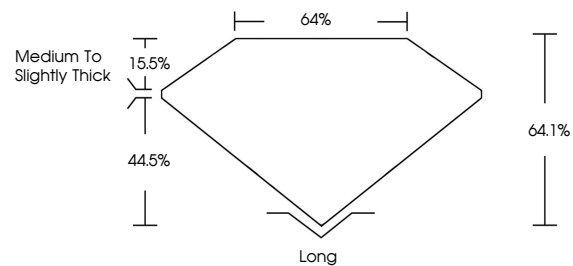
Symmetry **EXCELLENT**

Fluorescence **NONE**

Inscription(s) **IGI LG666444245**

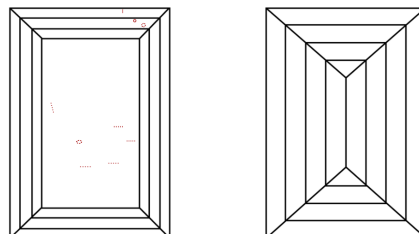
Comments: This Laboratory Grown Diamond was created by Chemical Vapor Deposition (CVD) growth process. Type IIa

**PROPORTIONS**



Sample Image Used

**CLARITY CHARACTERISTICS**



**KEY TO SYMBOLS**

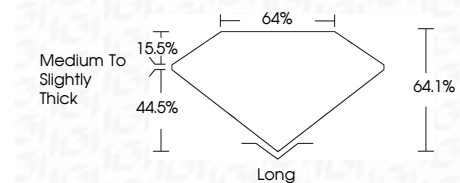
Red symbols indicate internal characteristics.  
Green symbols indicate external characteristics.

**COLOR**

D E F G H I J Faint Very Light Light

**CLARITY**

IF	WS <sup>1-2</sup>	VS <sup>1-2</sup>	SI <sup>1-2</sup>	I <sup>1-3</sup>
Internally Flawless	Very Very Slightly Included	Very Slightly Included	Slightly Included	Included



**ADDITIONAL GRADING INFORMATION**

Polish **EXCELLENT**

Symmetry **EXCELLENT**

Fluorescence **NONE**

Inscription(s) **IGI LG666444245**

Comments: This Laboratory Grown Diamond was created by Chemical Vapor Deposition (CVD) growth process. Type IIa



**IGI**



November 29, 2024  
IGI Report No LG666444245  
BAGUETTE  
12.31 X 6.04 X 3.87 MM  
3.30 CARATS  
G  
VS 1  
64.1%  
44.5%  
Medium to Slightly Thick  
Long  
EXCELLENT  
EXCELLENT  
NONE  
IGI LG666444245

Comments: This Laboratory Grown Diamond was created by Chemical Vapor Deposition (CVD) growth process. Type IIa