



ELECTRONIC COPY

LG666441833
Report verification at igi.org



November 29, 2024

IGI Report Number **LG666441833**

Description **LABORATORY GROWN DIAMOND**

Shape and Cutting Style **CUT CORNERED
RECTANGULAR MODIFIED
BRILLIANT**

Measurements **8.75 X 5.93 X 3.85 MM**

GRADING RESULTS

Carat Weight **1.79 CARAT**

Color Grade **FANCY VIVID BLUE**

Clarity Grade **VS 1**

November 29, 2024
IGI Report Number **LG666441833**
Description **LABORATORY GROWN DIAMOND**
Shape and Cutting Style **CUT CORNERED RECTANGULAR
MODIFIED BRILLIANT**
Measurements **8.75 X 5.93 X 3.85 MM**

GRADING RESULTS

Carat Weight **1.79 CARAT**

Color Grade **FANCY VIVID BLUE**

Clarity Grade **VS 1**

ADDITIONAL GRADING INFORMATION

Polish **EXCELLENT**

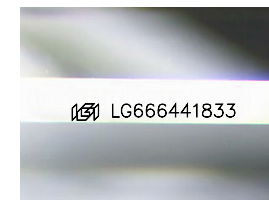
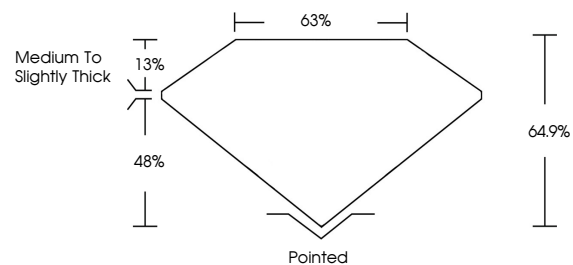
Symmetry **EXCELLENT**

Fluorescence **NONE**

Inscription(s) **IGI LG666441833**

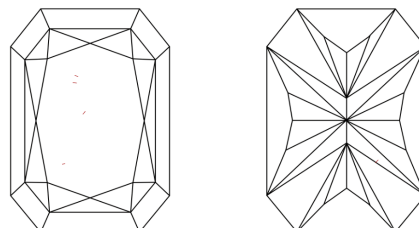
Comments: This Laboratory Grown Diamond was created by Chemical Vapor Deposition (CVD) growth process. Indications of post-growth treatment.

PROPORTIONS



Sample Image Used

CLARITY CHARACTERISTICS



KEY TO SYMBOLS

Red symbols indicate internal characteristics.
Green symbols indicate external characteristics.

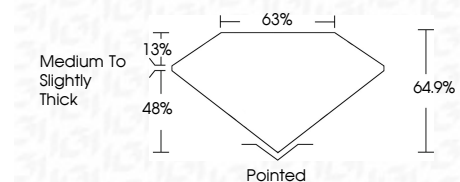
COLOR

D E F G H I J Faint Very Light Light

CLARITY

IF WS¹⁻² VS¹⁻² SI¹⁻² I¹⁻³

Internally Flawless Very Very Slightly Included Very Slightly Included Slightly Included Included



ADDITIONAL GRADING INFORMATION

Polish **EXCELLENT**

Symmetry **EXCELLENT**

Fluorescence **NONE**

Inscription(s) **IGI LG666441833**

Comments: This Laboratory Grown Diamond was created by Chemical Vapor Deposition (CVD) growth process. Indications of post-growth treatment.



IGI



November 29, 2024
IGI Report No LG666441833
CUT CORNERED RECT. MODIFIED BRILLIANT
8.75 X 5.93 X 3.85 MM
1.79 CARAT
FANCY VIVID BLUE
VS 1
64.9%
63%
Medium to Slightly Thick
Pointed
EXCELLENT
EXCELLENT
NONE
IGI LG666441833

Comments: This Laboratory Grown Diamond was created by Chemical Vapor Deposition (CVD) growth process. Indications of post-growth treatment.