



ELECTRONIC COPY

LG666425324
Report verification at igi.org



November 22, 2024

IGI Report Number **LG666425324**

Description **LABORATORY GROWN DIAMOND**

Shape and Cutting Style **ROUND BRILLIANT**

Measurements **8.66 - 8.73 X 5.31 MM**

GRADING RESULTS

Carat Weight **2.46 CARATS**

Color Grade **D**

Clarity Grade **VVS 2**

Cut Grade **IDEAL**

November 22, 2024
IGI Report Number **LG666425324**
Description **LABORATORY GROWN DIAMOND**
Shape and Cutting Style **ROUND BRILLIANT**
Measurements **8.66 - 8.73 X 5.31 MM**

GRADING RESULTS

Carat Weight **2.46 CARATS**

Color Grade **D**

Clarity Grade **VVS 2**

Cut Grade **IDEAL**

ADDITIONAL GRADING INFORMATION

Polish **EXCELLENT**

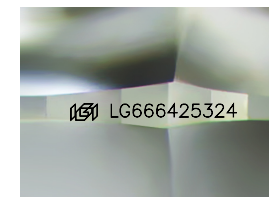
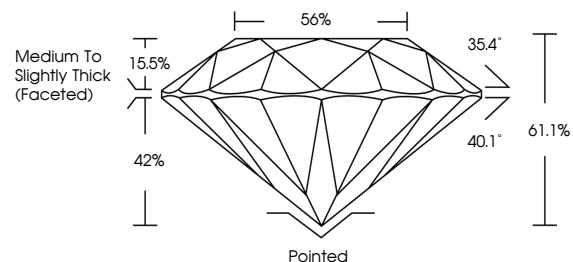
Symmetry **EXCELLENT**

Fluorescence **NONE**

Inscription(s) **LG666425324**

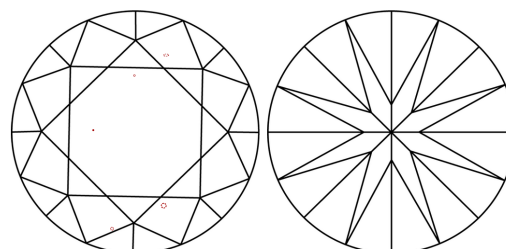
Comments: This Laboratory Grown Diamond was created by Chemical Vapor Deposition (CVD) growth process.
Type IIa

PROPORTIONS



Sample Image Used

CLARITY CHARACTERISTICS



KEY TO SYMBOLS

Red symbols indicate internal characteristics.
Green symbols indicate external characteristics.

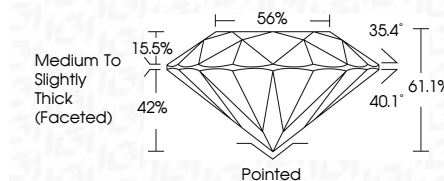
COLOR

D E F G H I J Faint Very Light Light

CLARITY

IF VS¹⁻² VS¹⁻² SI¹⁻² I¹⁻³

Internally Flawless Very Very Slightly Included Very Slightly Included Slightly Included Included



ADDITIONAL GRADING INFORMATION

Polish **EXCELLENT**

Symmetry **EXCELLENT**

Fluorescence **NONE**

Inscription(s) **LG666425324**

Comments: This Laboratory Grown Diamond was created by Chemical Vapor Deposition (CVD) growth process.
Type IIa



IGI



November 22, 2024	IGI Report No LG666425324	2.46 CARATS	D	VVS 2	IDEAL	56%	61.1%	35.4°	40.1°	Pointed	EXCELLENT	EXCELLENT	NONE	LG666425324
ROUND BRILLIANT	8.66 - 8.73 X 5.31 MM	Carat Weight	Color Grade	Clarity Grade	Cut Grade	Table	Depth	Girdle	Facet Angle	Style	Polish	Symmetry	Fluorescence	Inscription(s)

Comments: This Laboratory Grown Diamond was created by Chemical Vapor Deposition (CVD) growth process.
Type IIa