



ELECTRONIC COPY

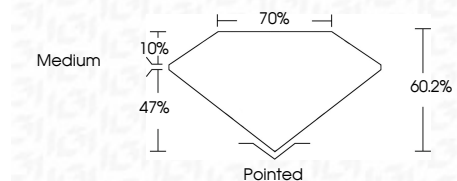
LG666419269
Report verification at igi.org



November 23, 2024
IGI Report Number **LG666419269**
Description **LABORATORY GROWN DIAMOND**
Shape and Cutting Style **HEXAGONAL STEP CUT**
Measurements **8.72 X 7.56 X 4.55 MM**

GRADING RESULTS

Carat Weight **2.09 CARATS**
Color Grade **F**
Clarity Grade **VVS 2**



ADDITIONAL GRADING INFORMATION

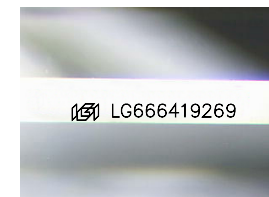
Polish **EXCELLENT**
Symmetry **EXCELLENT**
Fluorescence **NONE**
Inscription(s) **IGI LG666419269**
Comments: This Laboratory Grown Diamond was created by Chemical Vapor Deposition (CVD) growth process. Type IIa



IGI

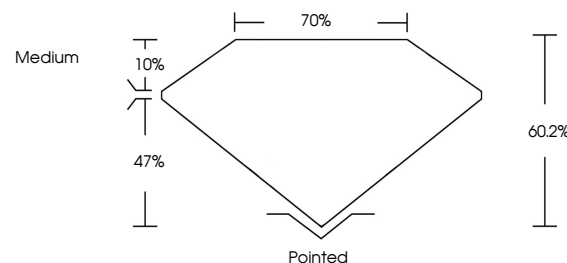
November 23, 2024
IGI Report No LG666419269
HEXAGONAL STEP CUT
8.72 X 7.56 X 4.55 MM
2.09 CARATS
F
VVS 2
60.2%
70%
Medium
Pointed
EXCELLENT
EXCELLENT
NONE
IGI LG666419269

Comments: This Laboratory Grown Diamond was created by Chemical Vapor Deposition (CVD) growth process. Type IIa

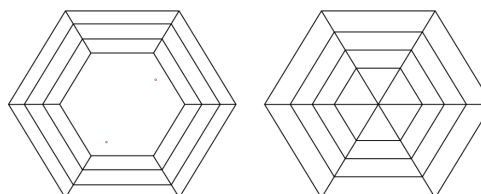


Sample Image Used

PROPORTIONS



CLARITY CHARACTERISTICS



KEY TO SYMBOLS

Red symbols indicate internal characteristics.
Green symbols indicate external characteristics.

COLOR

D E F G H I J Faint Very Light Light

CLARITY

IF	VS ¹⁻²	VS ¹⁻²	SI ¹⁻²	I ¹⁻³
Internally Flawless	Very Very Slightly Included	Very Slightly Included	Slightly Included	Included

