



ELECTRONIC COPY

LG666411209
Report verification at igi.org



November 20, 2024

IGI Report Number **LG666411209**

Description **LABORATORY GROWN DIAMOND**

Shape and Cutting Style **ROUND BRILLIANT**

Measurements **13.71 - 13.80 X 8.62 MM**

GRADING RESULTS

Carat Weight **10.01 CARATS**

Color Grade **E**

Clarity Grade **SI 1**

Cut Grade **EXCELLENT**

November 20, 2024
IGI Report Number **LG666411209**
Description **LABORATORY GROWN DIAMOND**
Shape and Cutting Style **ROUND BRILLIANT**
Measurements **13.71 - 13.80 X 8.62 MM**

GRADING RESULTS

Carat Weight **10.01 CARATS**

Color Grade **E**

Clarity Grade **SI 1**

Cut Grade **EXCELLENT**

ADDITIONAL GRADING INFORMATION

Polish **EXCELLENT**

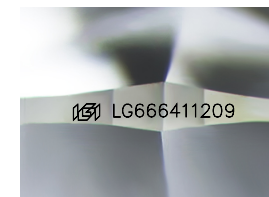
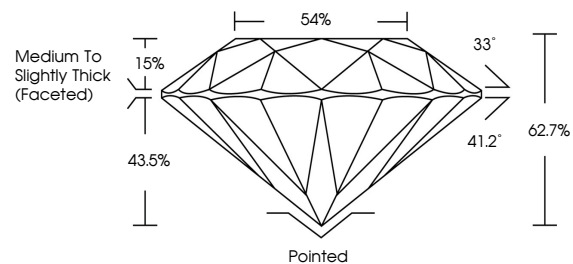
Symmetry **EXCELLENT**

Fluorescence **NONE**

Inscription(s) **IGI LG666411209**

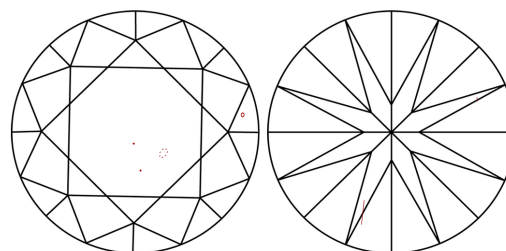
Comments: This Laboratory Grown Diamond was created by Chemical Vapor Deposition (CVD) growth process. Type IIa

PROPORTIONS



Sample Image Used

CLARITY CHARACTERISTICS



KEY TO SYMBOLS

Red symbols indicate internal characteristics.
Green symbols indicate external characteristics.

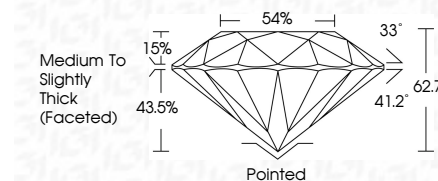
COLOR

D E F G H I J Faint Very Light Light

CLARITY

IF VS¹⁻² VS¹⁻² SI¹⁻² I¹⁻³

Internally Flawless Very Very Slightly Included Very Slightly Included Slightly Included Included



ADDITIONAL GRADING INFORMATION

Polish **EXCELLENT**

Symmetry **EXCELLENT**

Fluorescence **NONE**

Inscription(s) **IGI LG666411209**

Comments: This Laboratory Grown Diamond was created by Chemical Vapor Deposition (CVD) growth process. Type IIa



IGI



November 20, 2024
IGI Report No LG666411209
ROUND BRILLIANT
13.71 - 13.80 X 8.62 MM
10.01 CARATS
E
SI 1
EXCELLENT
62.7%
54%
Medium To Slightly Thick (Faceted)
Pointed
EXCELLENT
EXCELLENT
NONE
IGI LG666411209
Comments: This Laboratory Grown Diamond was created by Chemical Vapor Deposition (CVD) growth process. Type IIa