



**ELECTRONIC COPY**

## LABORATORY GROWN DIAMOND REPORT

November 20, 2024	
IGI Report Number	LG666402950
Description	LABORATORY GROWN DIAMOND
Shape and Cutting Style	CUT CORNERED RECTANGULAR MODIFIED BRILLIANT
Measurements	10.07 X 6.95 X 4.72 MM

## GRADING RESULTS

Carat Weight	2.93 CARATS
Color Grade	F
Clarity Grade	VS 2

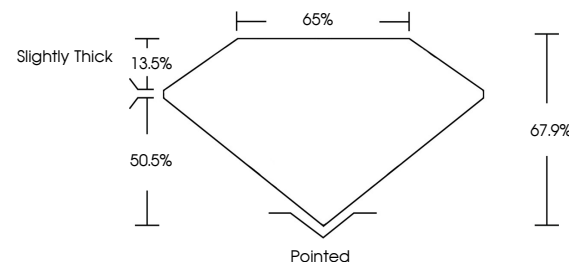
### ADDITIONAL GRADING INFORMATION

Polish	EXCELLENT
Symmetry	EXCELLENT
Fluorescence	NONE
Inscription(s)	15 LG666402950

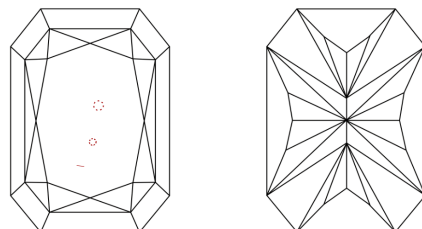
Comments: This Laboratory Grown Diamond was created by Chemical Vapor Deposition (CVD) growth process.  
Type IIa

LG666402950  
Report verification at [lgi.org](https://lgi.org)

## PROPORTIONS

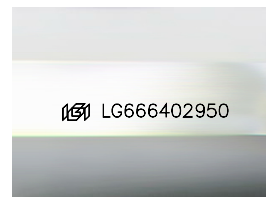


## CLARITY CHARACTERISTICS



### KEY TO SYMBOLS

Red symbols indicate internal characteristics.  
Green symbols indicate external characteristics.



Sample Image Used

## COLOR

D E F G H I J Faint Very Light Light

## CLARITY

IF      VWS<sup>1-2</sup>      VS<sup>1-2</sup>      SI<sup>1-2</sup>      I<sup>1-3</sup>

Internally Flawless	Very Very Slightly Included	Very Slightly Included	Slightly Included	Included
---------------------	-----------------------------	------------------------	-------------------	----------

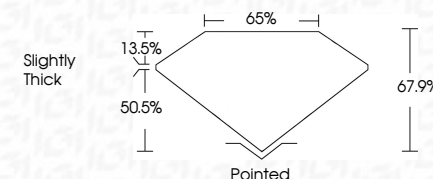
## LABORATORY GROWN DIAMOND REPORT



November 20, 2024	
IGI Report Number	LG666402950
Description	LABORATORY GROWN DIAMOND
Shape and Cutting Style	CUT CORNERED RECTANGULAR MODIFIED BRILLIANT
Measurements	10.07 X 6.95 X 4.72 MM

## GRADING RESULTS

Carat Weight	2.93 CARATS
Color Grade	F
Clarity Grade	VS 2



### ADDITIONAL GRADING INFORMATION

Polish	EXCELLENT
Symmetry	EXCELLENT
Fluorescence	NONE
Inscription(s)	 LG666402950
<p>Comments: This Laboratory Grown Diamond was created by Chemical Vapor Deposition (CVD) growth process.</p> <p>Type IIa</p>	



© IGI 2020, International Gemological Institute

FD - 10 20

**www.igi.org**

THIS DOCUMENT WAS PRODUCED WITH THE FOLLOWING SECURITY MEASURES: SPECIAL DOCUMENT PAPER, INK SCREENS, WATERMARK, BACKGROUND DESIGNS, HOLOGRAM AND OTHER SECURITY FEATURES NOT LISTED AND DO EXCEED DOCUMENT SECURITY INDUSTRY GUIDELINES

November 20, 2024	2/3 CARATS	F	VS 2	61.9%	65%	Slightly Thick	Parted	EXCELLENT	EXCELLENT	NONE	#811G566402950
GI Report No. LG566402950											
3/1 CUT CORNERED RECT. MODIFIED BRILLIANT											
10.07 X 6.95 X 4.72 MM											
Carat Weight	Color Grade	Clarity Grade	Depth	Table	Grade	Quel	Polish	Symmetry	Fluorescence	Inscriptions(s)	

Comments: Very Fine, Green Diamond was created by Chemical Vapor Deposition (CVD) growth process.

Type IIa