



ELECTRONIC COPY

LG665459513
Report verification at igi.org



November 25, 2024
IGI Report Number **LG665459513**
Description **LABORATORY GROWN DIAMOND**
Shape and Cutting Style **SQUARE CUSHION MODIFIED BRILLIANT**
Measurements **7.13 X 6.70 X 4.44 MM**
GRADING RESULTS
Carat Weight **1.98 CARAT**
Color Grade **FANCY INTENSE YELLOW**
Clarity Grade **VS 2**

November 25, 2024
IGI Report Number **LG665459513**
Description **LABORATORY GROWN DIAMOND**
Shape and Cutting Style **SQUARE CUSHION MODIFIED BRILLIANT**
Measurements **7.13 X 6.70 X 4.44 MM**

GRADING RESULTS

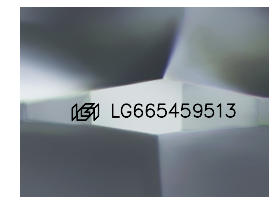
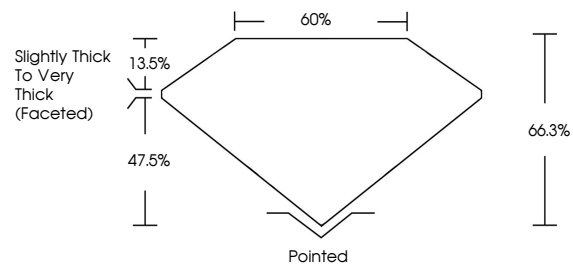
Carat Weight **1.98 CARAT**
Color Grade **FANCY INTENSE YELLOW**
Clarity Grade **VS 2**

ADDITIONAL GRADING INFORMATION

Polish **EXCELLENT**
Symmetry **EXCELLENT**
Fluorescence **NONE**
Inscription(s) **IGI LG665459513**

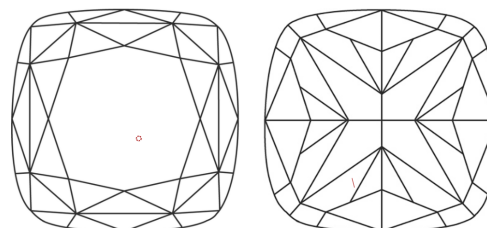
Comments: This Laboratory Grown Diamond was created by Chemical Vapor Deposition (CVD) growth process.

PROPORTIONS



Sample Image Used

CLARITY CHARACTERISTICS



KEY TO SYMBOLS

Red symbols indicate internal characteristics.
Green symbols indicate external characteristics.

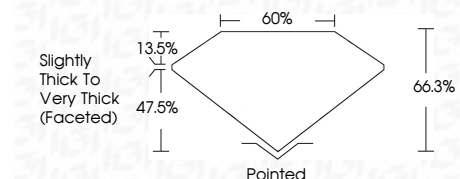
COLOR

D E F G H I J Faint Very Light Light

CLARITY

IF VS¹⁻² VS¹⁻² SI¹⁻² I¹⁻³

Internally Flawless Very Very Slightly Included Very Slightly Included Slightly Included Included



ADDITIONAL GRADING INFORMATION

Polish **EXCELLENT**
Symmetry **EXCELLENT**
Fluorescence **NONE**
Inscription(s) **IGI LG665459513**
Comments: This Laboratory Grown Diamond was created by Chemical Vapor Deposition (CVD) growth process.



IGI



November 25, 2024
IGI Report No **LG665459513**
SQUARE CUSHION MODIFIED BRILLIANT
7.13 X 6.70 X 4.44 MM
1.98 CARAT
Color Grade **FANCY INTENSE YELLOW**
Clarity Grade **VS 2**
Table **60%**
Girdle **Slightly Thick To Very Thick (Faceted)**
Culet **Pointed**
Polish **EXCELLENT**
Symmetry **EXCELLENT**
Fluorescence **NONE**
Inscription(s) **IGI LG665459513**
Comments: This Laboratory Grown Diamond was created by Chemical Vapor Deposition (CVD) growth process.