



ELECTRONIC COPY

LG665443031
Report verification at igi.org



November 27, 2024
IGI Report Number **LG665443031**
Description **LABORATORY GROWN DIAMOND**
Shape and Cutting Style **CUT CORNERED
RECTANGULAR MODIFIED
BRILLIANT**
Measurements **8.05 X 5.89 X 3.94 MM**
GRADING RESULTS
Carat Weight **1.78 CARAT**
Color Grade **FANCY VIVID BLUE**
Clarity Grade **VVS 2**

November 27, 2024
IGI Report Number **LG665443031**
Description **LABORATORY GROWN DIAMOND**
Shape and Cutting Style **CUT CORNERED RECTANGULAR
MODIFIED BRILLIANT**
Measurements **8.05 X 5.89 X 3.94 MM**

GRADING RESULTS

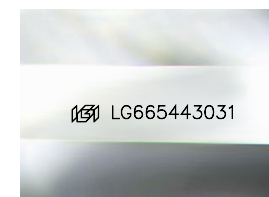
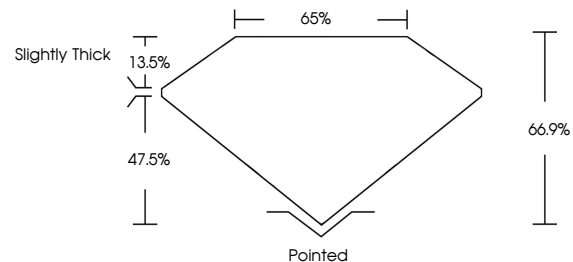
Carat Weight **1.78 CARAT**
Color Grade **FANCY VIVID BLUE**
Clarity Grade **VVS 2**

ADDITIONAL GRADING INFORMATION

Polish **EXCELLENT**
Symmetry **EXCELLENT**
Fluorescence **NONE**
Inscription(s) **IGI LG665443031**

Comments: This Laboratory Grown Diamond was created by High Pressure High Temperature (HPHT) growth process. Indications of post-growth treatment.

PROPORTIONS



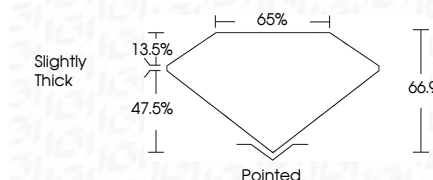
Sample Image Used

COLOR

D E F G H I J Faint Very Light Light

CLARITY

IF	VS ¹⁻²	VS ¹⁻²	SI ¹⁻²	I ¹⁻³
Internally Flawless	Very Very Slightly Included	Very Slightly Included	Slightly Included	Included



ADDITIONAL GRADING INFORMATION

Polish **EXCELLENT**
Symmetry **EXCELLENT**
Fluorescence **NONE**
Inscription(s) **IGI LG665443031**
Comments: This Laboratory Grown Diamond was created by High Pressure High Temperature (HPHT) growth process. Indications of post-growth treatment.



IGI



November 27, 2024
IGI Report No **LG665443031**
CUT CORNERED RECT. MODIFIED BRILLIANT
8.05 X 5.89 X 3.94 MM
Carat Weight **1.78 CARAT**
Color Grade **FANCY VIVID BLUE**
Clarity Grade **VVS 2**
Depth **66.9%**
Table **65%**
Girdle **Slightly Thick**
Culet **Pointed**
Polish **EXCELLENT**
Symmetry **EXCELLENT**
Fluorescence **NONE**
Inscription(s) **IGI LG665443031**

Comments: This Laboratory Grown Diamond was created by High Pressure High Temperature (HPHT) growth process. Indications of post-growth treatment.