



ELECTRONIC COPY

LG665442595
Report verification at igi.org



December 10, 2024

IGI Report Number **LG665442595**

Description **LABORATORY GROWN DIAMOND**

Shape and Cutting Style **EMERALD CUT**

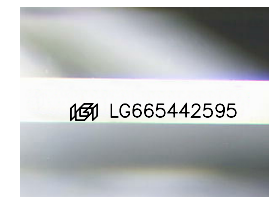
Measurements **10.98 X 7.78 X 5.17 MM**

GRADING RESULTS

Carat Weight **4.30 CARATS**

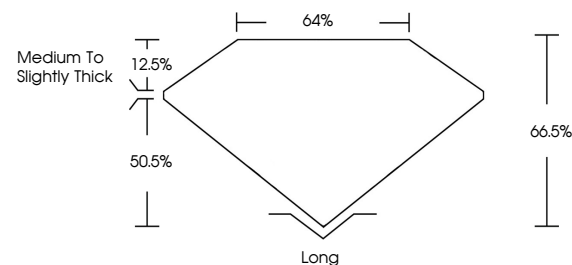
Color Grade **E**

Clarity Grade **VVS 2**

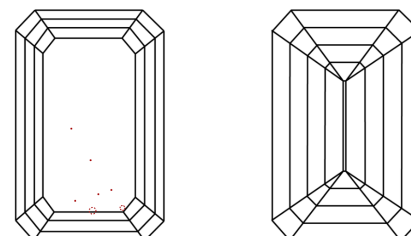


Sample Image Used

PROPORTIONS



CLARITY CHARACTERISTICS



KEY TO SYMBOLS

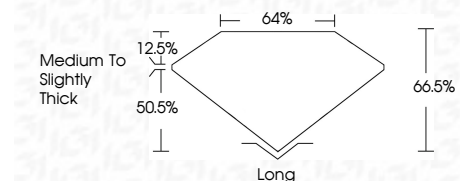
Red symbols indicate internal characteristics.
Green symbols indicate external characteristics.

COLOR

D E F G H I J Faint Very Light Light

CLARITY

IF	VS ¹⁻²	VS ¹⁻²	SI ¹⁻²	I ¹⁻³
Internally Flawless	Very Very Slightly Included	Very Slightly Included	Slightly Included	Included



ADDITIONAL GRADING INFORMATION

Polish **EXCELLENT**

Symmetry **EXCELLENT**

Fluorescence **NONE**

Inscription(s) **IGI LG665442595**

Comments: This Laboratory Grown Diamond was created by Chemical Vapor Deposition (CVD) growth process. Type IIa



IGI



December 10, 2024
IGI Report No. LG665442595
EMERALD CUT
10.98 X 7.78 X 5.17 MM
4.30 CARATS
E
VVS 2
66.5%
50.5%
12.5%
64%
Medium to Slightly Thick
Long
EXCELLENT
EXCELLENT
NONE
IGI LG665442595
Comments: This Laboratory Grown Diamond was created by Chemical Vapor Deposition (CVD) growth process. Type IIa