



**ELECTRONIC COPY**

## LABORATORY GROWN DIAMOND REPORT

LG665431347  
Report verification at [igi.org](https://www.igi.org)

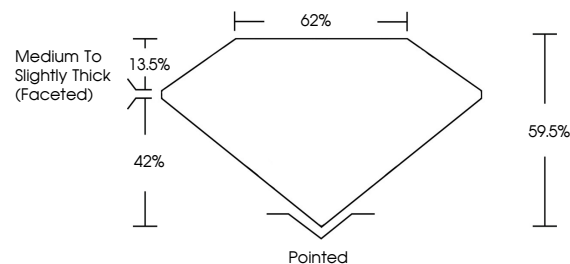
November 16, 2024	
IGI Report Number	LG665431347
Description	LABORATORY GROWN DIAMOND
Shape and Cutting Style	PEAR BRILLIANT
Measurements	15.29 X 9.64 X 5.74 MM
GRADING RESULTS	
Carat Weight	5.02 CARATS
Color Grade	D
Clarity Grade	VVS 2

### ADDITIONAL GRADING INFORMATION

Polish	EXCELLENT
Symmetry	EXCELLENT
Fluorescence	NONE
Inscription(s)	15 LG665431347

Comments: This Laboratory Grown Diamond was created by Chemical Vapor Deposition (CVD) growth process.  
Type IIa

## PROPORTIONS



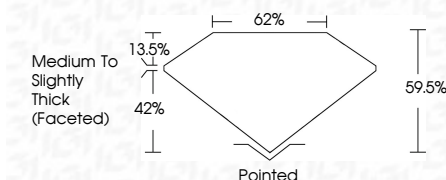
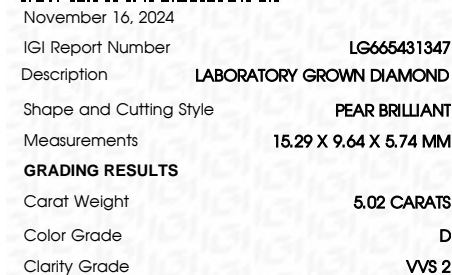
## COLOR

D E F G H I J Faint Very Light Light

## CLARITY

IF	VS <sup>1-2</sup>	VS <sup>1-2</sup>	SI <sup>1-2</sup>	I <sup>1-3</sup>
Internally Flawless	Very Very Slightly Included	Very Slightly Included	Slightly Included	Included

## LABORATORY GROWN DIAMOND REPORT



### ADDITIONAL GRADING INFORMATION

Polish	EXCELLENT
Symmetry	EXCELLENT
Fluorescence	NONE
Inscription(s)	 LG665431347
<p>Comments: This Laboratory Grown Diamond was created by Chemical Vapor Deposition (CVD) growth process.</p> <p>Type IIa</p>	



© IGI 2020, International Gemological Institute

FD - 10 20



**www.igi.org**

November 16, 2024  
GI Report No LG665431347  
PEAR BRILLIANT

5.02 CARATS D  
VVS 2  
59.5%  
62%  
Medium To Slightly  
Thick (recessed)  
Pointed  
EXCELLENT  
EXCELLENT  
NONE  
4291125655431947

**Comments:**  
This Laboratory Grown Diamond was  
created by Chemical Vapor Deposition  
(CVD) growth process.