



ELECTRONIC COPY

LG665430549 Report verification at igi.org



November 18, 2024 IGI Report Number LG665430549 Description LABORATORY GROWN DIAMOND Shape and Cutting Style PEAR BRILLIANT Measurements 10.76 X 7.08 X 4.35 MM GRADING RESULTS Carat Weight 1.98 CARAT Color Grade E Clarity Grade VVS 2

LABORATORY GROWN DIAMOND REPORT

November 18, 2024 IGI Report Number LG665430549 Description LABORATORY GROWN DIAMOND Shape and Cutting Style PEAR BRILLIANT Measurements 10.76 X 7.08 X 4.35 MM

GRADING RESULTS

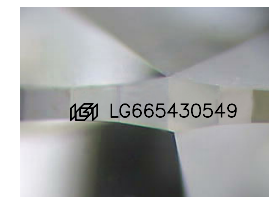
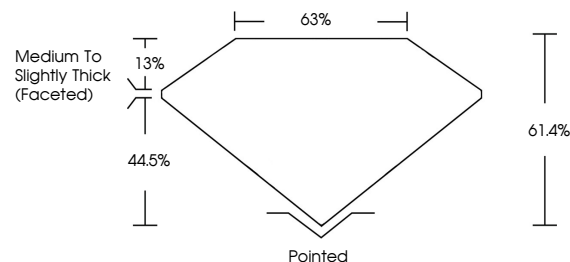
Carat Weight 1.98 CARAT Color Grade E Clarity Grade VVS 2

ADDITIONAL GRADING INFORMATION

Polish EXCELLENT Symmetry EXCELLENT Fluorescence NONE Inscription(s) IGI LG665430549

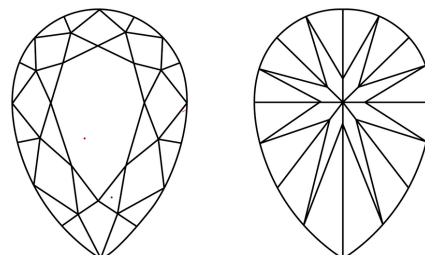
Comments: This Laboratory Grown Diamond was created by Chemical Vapor Deposition (CVD) growth process. Type IIa

PROPORTIONS



Sample Image Used

CLARITY CHARACTERISTICS



KEY TO SYMBOLS

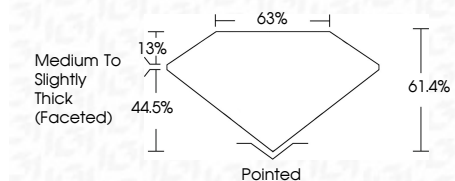
Red symbols indicate internal characteristics. Green symbols indicate external characteristics.

COLOR

D E F G H I J Faint Very Light Light

CLARITY

IF VVS 1-2 VS 1-2 SI 1-2 I 1-3 Internally Flawless Very Very Slightly Included Very Slightly Included Slightly Included Included



ADDITIONAL GRADING INFORMATION

Polish EXCELLENT Symmetry EXCELLENT Fluorescence NONE Inscription(s) IGI LG665430549 Comments: This Laboratory Grown Diamond was created by Chemical Vapor Deposition (CVD) growth process. Type IIa



IGI



November 18, 2024 IGI Report No LG665430549 PEAR BRILLIANT 1.98 CARAT E VVS 2 61.4% 63% Medium to Slightly Thick (Faceted) Pointed EXCELLENT EXCELLENT NONE NONE IGI LG665430549 Comments: This Laboratory Grown Diamond was created by Chemical Vapor Deposition (CVD) growth process. Type IIa