



**ELECTRONIC COPY**

LG665409666  
Report verification at igi.org



December 6, 2024  
IGI Report Number **LG665409666**  
Description **LABORATORY GROWN DIAMOND**  
Shape and Cutting Style **HEART BRILLIANT**  
Measurements **6.41 X 7.71 X 4.45 MM**  
**GRADING RESULTS**  
Carat Weight **1.29 CARAT**  
Color Grade **E**  
Clarity Grade **VVS 2**

**LABORATORY GROWN DIAMOND REPORT**

December 6, 2024  
IGI Report Number **LG665409666**  
Description **LABORATORY GROWN DIAMOND**  
Shape and Cutting Style **HEART BRILLIANT**  
Measurements **6.41 X 7.71 X 4.45 MM**

**GRADING RESULTS**

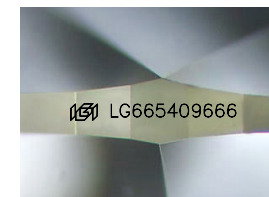
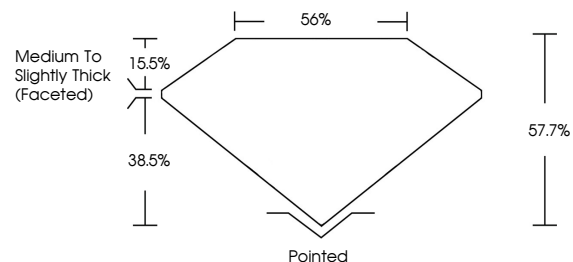
Carat Weight **1.29 CARAT**  
Color Grade **E**  
Clarity Grade **VVS 2**

**ADDITIONAL GRADING INFORMATION**

Polish **EXCELLENT**  
Symmetry **EXCELLENT**  
Fluorescence **NONE**  
Inscription(s) **IGI LG665409666**

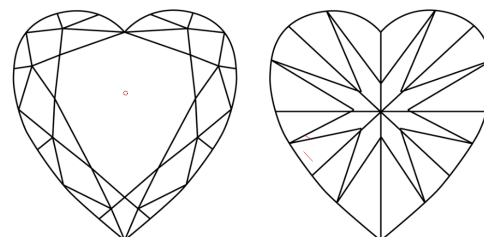
Comments: As Grown - No indication of post-growth treatment.  
This Laboratory Grown Diamond was created by High Pressure High Temperature (HPHT) growth process. Type II

**PROPORTIONS**



Sample Image Used

**CLARITY CHARACTERISTICS**



**KEY TO SYMBOLS**

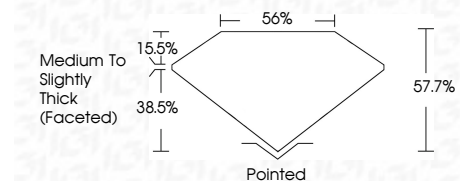
Red symbols indicate internal characteristics.  
Green symbols indicate external characteristics.

**COLOR**

D E F G H I J Faint Very Light Light

**CLARITY**

|                     |                             |                        |                   |                  |
|---------------------|-----------------------------|------------------------|-------------------|------------------|
| IF                  | VS <sup>1-2</sup>           | VS <sup>1-2</sup>      | SI <sup>1-2</sup> | I <sup>1-3</sup> |
| Internally Flawless | Very Very Slightly Included | Very Slightly Included | Slightly Included | Included         |



**ADDITIONAL GRADING INFORMATION**

Polish **EXCELLENT**  
Symmetry **EXCELLENT**  
Fluorescence **NONE**  
Inscription(s) **IGI LG665409666**  
Comments: As Grown - No indication of post-growth treatment.  
This Laboratory Grown Diamond was created by High Pressure High Temperature (HPHT) growth process. Type II



**IGI**



December 6, 2024  
IGI Report No **LG665409666**  
**HEART BRILLIANT**  
6.41 X 7.71 X 4.45 MM  
1.29 CARAT  
E  
VVS 2  
57.7%  
38.5%  
Medium to Slightly Thick (Faceted)  
Pointed  
EXCELLENT  
EXCELLENT  
NONE  
IGI LG665409666  
Comments: As Grown - No indication of post-growth treatment.  
This Laboratory Grown Diamond was created by High Pressure High Temperature (HPHT) growth process. Type II