



ELECTRONIC COPY

LG665407400
Report verification at igi.org



December 10, 2024
IGI Report Number **LG665407400**
Description **LABORATORY GROWN DIAMOND**
Shape and Cutting Style **CUT CORNERED
RECTANGULAR MODIFIED
BRILLIANT**
Measurements **10.01 X 7.13 X 4.78 MM**
GRADING RESULTS
Carat Weight **3.02 CARATS**
Color Grade **FANCY VIVID BLUE**
Clarity Grade **SI 1**

December 10, 2024
IGI Report Number **LG665407400**
Description **LABORATORY GROWN DIAMOND**
Shape and Cutting Style **CUT CORNERED RECTANGULAR
MODIFIED BRILLIANT**
Measurements **10.01 X 7.13 X 4.78 MM**

GRADING RESULTS

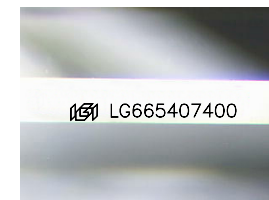
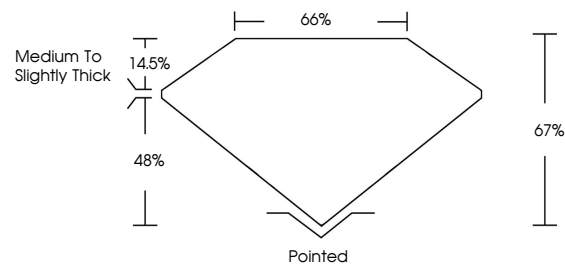
Carat Weight **3.02 CARATS**
Color Grade **FANCY VIVID BLUE**
Clarity Grade **SI 1**

ADDITIONAL GRADING INFORMATION

Polish **EXCELLENT**
Symmetry **EXCELLENT**
Fluorescence **NONE**
Inscription(s) **IGI LG665407400**

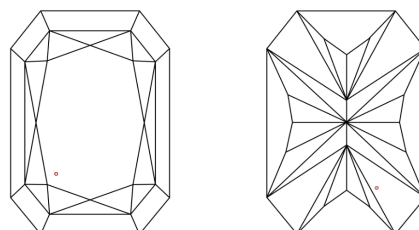
Comments: This Laboratory Grown Diamond was created by Chemical Vapor Deposition (CVD) growth process. Indications of post-growth treatment.

PROPORTIONS



Sample Image Used

CLARITY CHARACTERISTICS



KEY TO SYMBOLS

Red symbols indicate internal characteristics.
Green symbols indicate external characteristics.

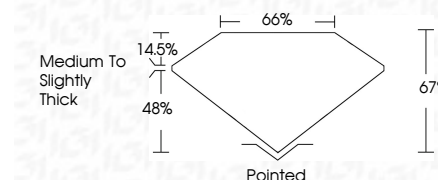
COLOR

D E F G H I J Faint Very Light Light

CLARITY

IF VS¹⁻² VS¹⁻² SI¹⁻² I¹⁻³

Internally Flawless Very Very Slightly Included Very Slightly Included Slightly Included Included



ADDITIONAL GRADING INFORMATION

Polish **EXCELLENT**
Symmetry **EXCELLENT**
Fluorescence **NONE**
Inscription(s) **IGI LG665407400**
Comments: This Laboratory Grown Diamond was created by Chemical Vapor Deposition (CVD) growth process. Indications of post-growth treatment.



December 10, 2024
IGI Report No **LG665407400**
CUT CORNERED RECT. MODIFIED BRILLIANT
10.01 X 7.13 X 4.78 MM
Carat Weight **3.02 CARATS**
Color Grade **FANCY VIVID BLUE**
Clarity Grade **SI 1**
Depth **48%**
Table **14.5%**
Girdle **Medium to Slightly Thick**
Culet **Pointed**
Polish **EXCELLENT**
Symmetry **EXCELLENT**
Fluorescence **NONE**
Inscription(s) **IGI LG665407400**
Comments: This Laboratory Grown Diamond was created by Chemical Vapor Deposition (CVD) growth process. Indications of post-growth treatment.