

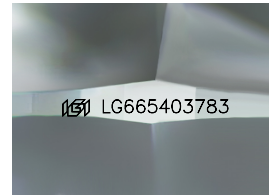
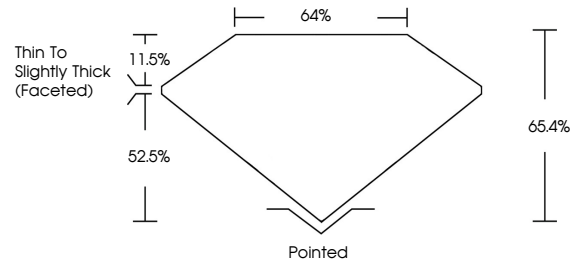


**INTERNATIONAL
GEMOLOGICAL
INSTITUTE**

ELECTRONIC COPY

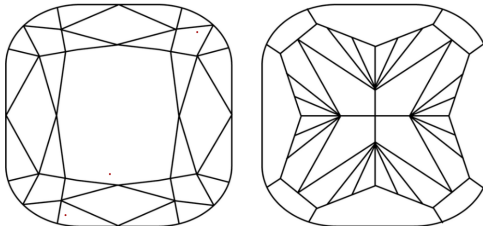
LG665403783
Report verification at igi.org

PROPORTIONS



Sample Image Used

CLARITY CHARACTERISTICS



KEY TO SYMBOLS

Red symbols indicate internal characteristics.
Green symbols indicate external characteristics.

COLOR

D E F G H I J Faint Very Light Light

CLARITY

IF	WS ¹⁻²	VS ¹⁻²	SI ¹⁻²	I ¹⁻³

Internally Flawless	Very Very Slightly Included	Very Slightly Included	Slightly Included	Included
------------------------	--------------------------------	---------------------------	----------------------	----------

LABORATORY GROWN DIAMOND REPORT



January 25, 2025

IGI Report Number **LG665403783**Description **LABORATORY GROWN DIAMOND**

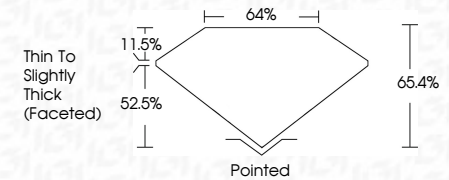
Shape and Cutting Style **SQUARE CUSHION MODIFIED
BRILLIANT**

Measurements **6.06 X 5.81 X 3.80 MM**

GRADING RESULTS

Carat Weight 1.03 CARAT

Color Grade **E**

Clarity Grade **VVS 2**

ADDITIONAL GRADING INFORMATION

Polish **EXCELLENT**Symmetry **EXCELLENT**Fluorescence **NONE**Inscription(s) LG665403783

Comments: This Laboratory Grown Diamond was created by Chemical Vapor Deposition (CVD) growth process.
Type IIa



IGI



© IGI 2020, International Gemological Institute

FD - 10 20

www.igi.org

January 25, 2025	IGL Report No IGL65403783	SQUARE CUSHION MODIFIED BRILLIANT
6.09 X 5.81 X 3.80 MM	1.08 CARAT	
Color Weight		
Color Grade		
Clarity Grade	VVS 2	
Depth	65.4%	
Table	66%	
Girdle	Thin to Slightly Thick (Faceted)	
Culet	Pointed	
Polish	EXCELLENT	
Symmetry	EXCELLENT	
Fluorescence	NONE	
Inscriptions	1891 G6566403783	
Comments:	This Laboratory Grown Diamond was certified by Chemical Vapor Deposition (CVD) using the HPHT growth process.	
Type IIA		