

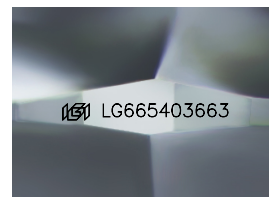
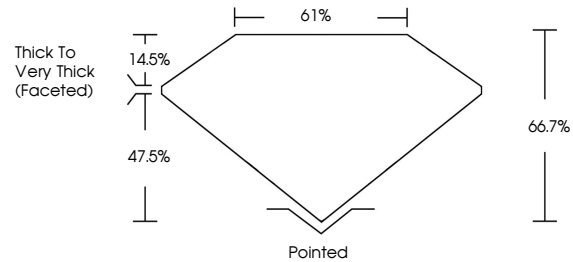


**INTERNATIONAL
GEMOLOGICAL
INSTITUTE**

ELECTRONIC COPY

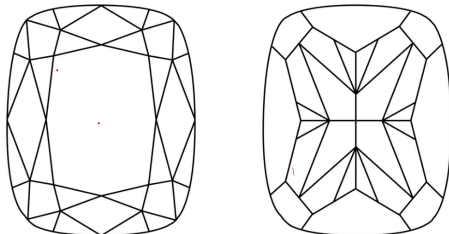
LG665403663
Report verification at igi.org

PROPORTIONS



Sample Image Used

CLARITY CHARACTERISTICS



KEY TO SYMBOLS

Red symbols indicate internal characteristics.
Green symbols indicate external characteristics.

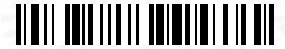
COLOR

D E F G H I J Faint Very Light Light

CLARITY

IF WS¹⁻² VS¹⁻² SI¹⁻² |¹⁻³

Internally Flawless	Very Very Slightly Included	Very Slightly Included	Slightly Included	Included
------------------------	--------------------------------	---------------------------	----------------------	----------



January 24, 2025

IGI Report Number **LG665403663**

Description	LABORATORY GROWN DIAMOND
-------------	--------------------------

Shape and Cutting Style **CUSHION MODIFIED
BRILLIANT**

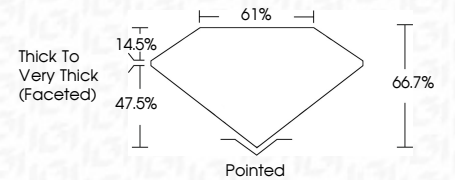
Measurements **7.53 X 7.12 X 4.75 MM**

GRADING RESULTS

Carat Weight **2.01 CARATS**

Color Grade	F
-------------	---

Clarity Grade VS 1



ADDITIONAL GRADING INFORMATION

Polish **EXCELLENT**Symmetry **EXCELLENT**Fluorescence **NONE**Inscription(s) LG665403663

Comments: This Laboratory Grown Diamond was created by Chemical Vapor Deposition (CVD) growth process.
Type IIa



IGI



© IGI 2020, International Gemological Institute

FD - 10 20

www.igi.org

January 24, 2025	GI Report No LG54503643	
CUSHION MODIFIED BRILLIANT		
5.63 X 7.12 X 4.75 MM		
Carat Weight	Color Grade	Clarity Grade
		VS 1
		66.7%
		61%
Thick to Very Thick (Faceted)		
Culet	Polish	Painted
Symmetry		EXCELLENT
Fluorescence		EXCELLENT
Inscriptions)		NONE
lg01 LG54503643		
Comments:		
This Laboratory Grown Diamond was created by Chemical Vapor Deposition (CVD) growth process.		
Type IId		