

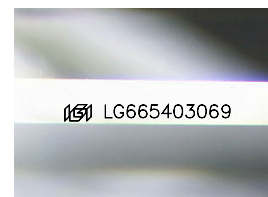
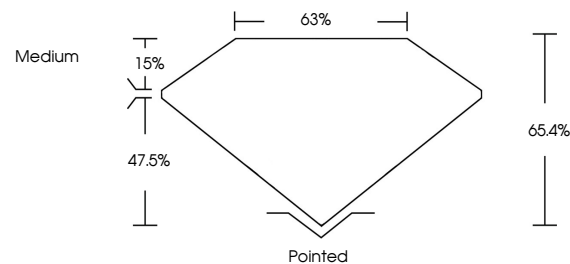


**ELECTRONIC COPY**

## LABORATORY GROWN DIAMOND REPORT

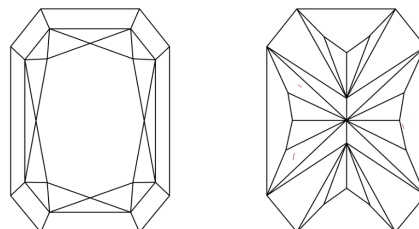
LG665403069  
Report verification at [lgi.org](https://lgi.org)

## PROPORTIONS



Sample Image Used

## CLARITY CHARACTERISTICS



## KEY TO SYMBOLS

Red symbols indicate internal characteristics.  
Green symbols indicate external characteristics.

## COLOR

D E F G H I J Faint Very Light Light

## CLARITY

IF      VWS<sup>1-2</sup>      VS<sup>1-2</sup>      SI<sup>1-2</sup>      I<sup>1-3</sup>

Internally Flawless	Very Very Slightly Included	Very Slightly Included	Slightly Included	Included
------------------------	--------------------------------	---------------------------	----------------------	----------

## LABORATORY GROWN DIAMOND REPORT



January 21, 2025

IGI Report Number **LG665403069**Description **LABORATORY GROWN DIAMOND**

Shape and Cutting Style

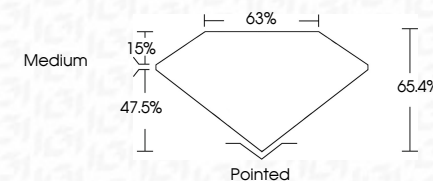
Measurements **8.83 X 6.38 X 4.17 MM**

## GRADING RESULTS

Carat Weight **2.00 CARATS**

Color Grade G

Clarity Grade VS 1



### ADDITIONAL GRADING INFORMATION

Polish **EXCELLENT**Symmetry **EXCELLENT**Fluorescence NONEInscription(s)  LG665403069

Comments: This Laboratory Grown Diamond was created by Chemical Vapor Deposition (CVD) growth process.  
Type IIa



© IGI 2020, International Gemological Institute

FD - 10 20

**www.igi.org**

THIS DOCUMENT WAS PRODUCED WITH THE FOLLOWING SECURITY MEASURES: SPECIAL DOCUMENT PAPER, INK SCREENS, WATERMARK, BACKGROUND DESIGNS, HOLOGRAM AND OTHER SECURITY FEATURES NOT LISTED AND DO EXCEED DOCUMENT SECURITY INDUSTRY GUIDELINE

January 21, 2025	GI Report No. LG56540309
CUT CORNERED RECT. MODIFIED BRILLIANT	
6.83 x 8.83 x 3.89 x 4.17 MM	2.10 CARATS
Color Grade	G
Clarity Grade	VS 1
Depth	65.4%
Table	65%
Girdle	Medium
Culet	Pointed
Polish	EXCELLENT
Symmetry	EXCELLENT
Fluorescence	NONE
Inscriptions(s)	6891 LG56540309

Comments:  
 This is a Very Good Diamond was  
 created by Chemical Vapor Deposition  
 (CVD) growth process.  
 Type IIa