



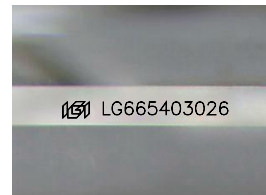
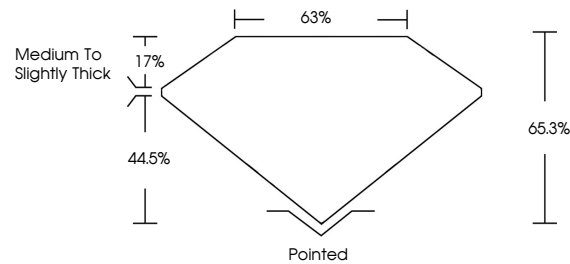
**INTERNATIONAL  
GEMOLOGICAL  
INSTITUTE**

**ELECTRONIC COPY**

## LABORATORY GROWN DIAMOND REPORT

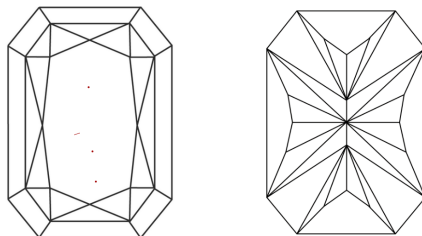
LG665403026  
Report verification at [igi.org](https://igi.org)

## PROPORTIONS



Sample Image Used

## CLARITY CHARACTERISTICS



## KEY TO SYMBOLS

Red symbols indicate internal characteristics.  
Green symbols indicate external characteristics.

**COLOR**

D E F G H I J Faint Very Light Light

## CLARITY

IF      WS<sup>1-2</sup>      VS<sup>1-2</sup>      SI<sup>1-2</sup>      I<sup>1-3</sup>

Internally Flawless	Very Very Slightly Included	Very Slightly Included	Slightly Included	Included
------------------------	--------------------------------	---------------------------	----------------------	----------



© IGI 2020, International Gemological Institute

FD - 10 20

**www.igi.org**

THIS DOCUMENT WAS PRODUCED WITH THE FOLLOWING SECURITY MEASURES: SPECIAL DOCUMENT PAPER, INK SCREENS, WATERMARK, BACKGROUND DESIGNS, HOLOGRAM AND OTHER SECURITY FEATURES NOT LISTED AND DO EXCEED DOCUMENT SECURITY INDUSTRY GUIDELINES

## LABORATORY GROWN DIAMOND REPORT



January 22, 2025

IGI Report Number **LG665403026**

Description	LABORATORY GROWN DIAMOND
-------------	--------------------------

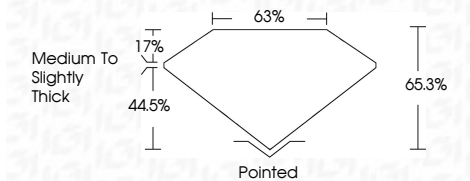
Shape and Cutting Style

CUT CORNERED  
RECTANGULAR MODIFIED  
BRILLIANT

Measurements **8.89 X 6.28 X 4.10 MM**

## GRADING RESULTS

Carat Weight **2.03 CARATS**

Color Grade **G**Clarity Grade VVS 2

### ADDITIONAL GRADING INFORMATION

Polish **EXCELLENT**Symmetry **EXCELLENT**Fluorescence **NONE**Inscription(s)  LG665403026

Comments: This Laboratory Grown Diamond was created by Chemical Vapor Deposition (CVD) growth process.  
Type IIa



IGI

January 22, 2025	IGI Report No. LG54543026	CUT CORNERED RECT. MODIFIED BRILLIANT
<div> <div>  </div> <div>  </div> </div>		
<div> <div>  </div> <div>  </div> </div>		
<div> <div>  </div> <div>  </div> </div>		
<div> <div>  </div> <div>  </div> </div>		
<div> <div>  </div> <div>  </div> </div>		
<div> <div>  </div> <div>  </div> </div>		
Weight	2.03 CARATS	G
Color	Color Grade	Clarity Grade
Depth	VS 2	65.3%
Table	65.3%	63%
Girdle	Medium to Slightly Thick	Polished
Culet	Polished	EXCELLENT
Polish	Polished	EXCELLENT
Symmetry	Polished	NONE
Fluorescence	Fluorescence	1691 LG566493026
Inscriptions	Inscriptions(s)	
<div> <div>  </div> <div>  </div> </div>		
<div> <div>  </div> <div>  </div> </div>		
<div> <div>  </div> <div>  </div> </div>		
<div> <div>  </div> <div>  </div> </div>		
<div> <div>  </div> <div>  </div> </div>		
<div> <div>  </div> <div>  </div> </div>		
<div> <div>  </div> <div>  </div> </div>		
<div> <div>  </div> <div>  </div> </div>		
<div> <div>  </div> <div>  </div> </div>		
<div> <div>  </div> <div>  </div> </div>		
<div> <div>  </div> <div>  </div> </div>		
<div> <div>  </div> <div>  </div> </div>		
<div> <div>  </div> <div>  </div> </div>		
<div> <div>  </div> <div>  </div> </div>		
<div> <div>  </div> <div>  </div> </div>		
<div> <div>  </div> <div>  </div> </div>		
<div> <div>  </div> <div>  </div> </div>		
<div> <div>  </div> <div>  </div> </div>		
<div> <div>  </div> <div>  </div> </div>		
<div> <div>  </div> <div>  </div> </div>		
<div> <div>  </div> <div>  </div> </div>		
<div> <div>  </div> <div>  </div> </div>		
<div> <div>  </div> <div> </div></div>		