



**ELECTRONIC COPY**

LG665402345  
Report verification at igi.org



November 21, 2024  
IGI Report Number **LG665402345**  
Description **LABORATORY GROWN DIAMOND**  
Shape and Cutting Style **SQUARE CUSHION MODIFIED BRILLIANT**  
Measurements **7.14 X 6.77 X 4.27 MM**  
**GRADING RESULTS**  
Carat Weight **1.61 CARAT**  
Color Grade **H**  
Clarity Grade **VS 1**

November 21, 2024  
IGI Report Number **LG665402345**  
Description **LABORATORY GROWN DIAMOND**  
Shape and Cutting Style **SQUARE CUSHION MODIFIED BRILLIANT**  
Measurements **7.14 X 6.77 X 4.27 MM**

**GRADING RESULTS**

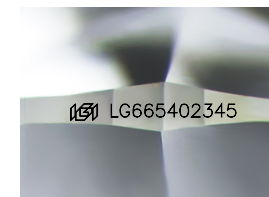
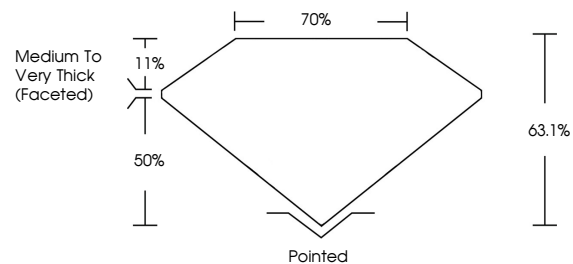
Carat Weight **1.61 CARAT**  
Color Grade **H**  
Clarity Grade **VS 1**

**ADDITIONAL GRADING INFORMATION**

Polish **VERY GOOD**  
Symmetry **VERY GOOD**  
Fluorescence **NONE**  
Inscription(s) **IGI LG665402345**

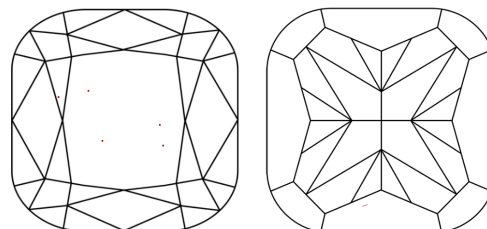
Comments: This Laboratory Grown Diamond was created by Chemical Vapor Deposition (CVD) growth process.  
Type IIa

**PROPORTIONS**



Sample Image Used

**CLARITY CHARACTERISTICS**



**KEY TO SYMBOLS**

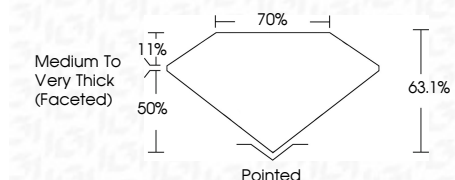
Red symbols indicate internal characteristics.  
Green symbols indicate external characteristics.

**COLOR**

D E F G H I J Faint Very Light Light

**CLARITY**

IF	VS <sup>1-2</sup>	VS <sup>1-2</sup>	SI <sup>1-2</sup>	I <sup>1-3</sup>
Internally Flawless	Very Very Slightly Included	Very Slightly Included	Slightly Included	Included



**ADDITIONAL GRADING INFORMATION**

Polish **VERY GOOD**  
Symmetry **VERY GOOD**  
Fluorescence **NONE**  
Inscription(s) **IGI LG665402345**  
Comments: This Laboratory Grown Diamond was created by Chemical Vapor Deposition (CVD) growth process.  
Type IIa



**IGI**



November 21, 2024  
IGI Report No LG665402345  
**SQUARE CUSHION MODIFIED BRILLIANT**  
7.14 X 6.77 X 4.27 MM  
Carat Weight **1.61 CARAT**  
Color Grade **H**  
Clarity Grade **VS 1**  
Depth **63.1%**  
Table **70%**  
Girdle **Medium to Very Thick (Faceted)**  
Culet **Pointed**  
Polish **VERY GOOD**  
Symmetry **VERY GOOD**  
Fluorescence **NONE**  
Inscription(s) **IGI LG665402345**  
Comments: This Laboratory Grown Diamond was created by Chemical Vapor Deposition (CVD) growth process.  
Type IIa