

INTERNATIONAL  
GEMOLOGICAL  
INSTITUTE

ELECTRONIC COPY

LABORATORY GROWN DIAMOND REPORT

November 12, 2024

IGI Report Number

Description

Shape and Cutting Style

Measurements

LG664409147

LABORATORY GROWN DIAMOND

ROUND BRILLIANT

10.38 - 10.44 x 6.30 mm

GRADING RESULTS

Carat Weight

Color Grade

Clarity Grade

Cut Grade

4.13 CARATS

E

VVS 2

IDEAL

ADDITIONAL GRADING INFORMATION

Polish

Symmetry

Fluorescence

Inscription(s)

Comments: HEARTS & ARROWS

This Laboratory Grown Diamond was created by Chemical Vapor Deposition (CVD) growth process. Type IIa

EXCELLENT

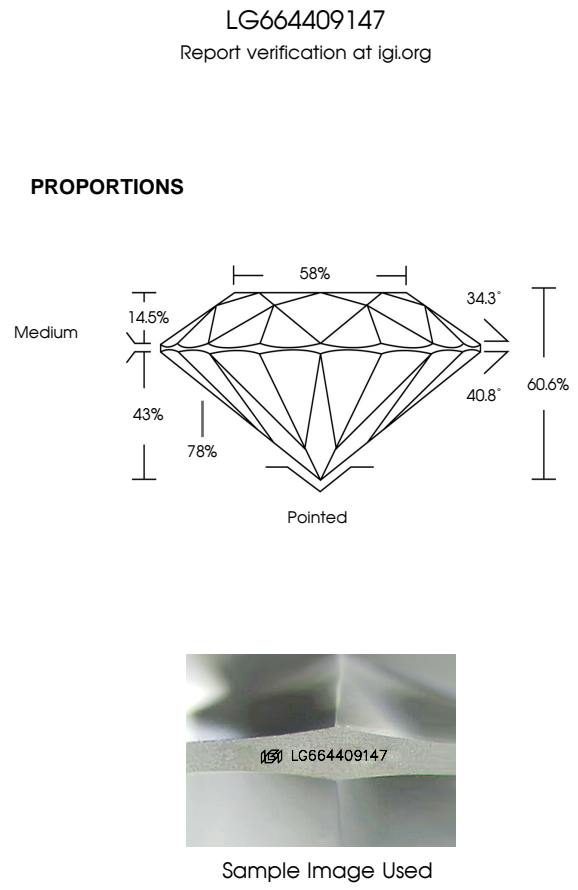
EXCELLENT

NONE

IGI LG664409147

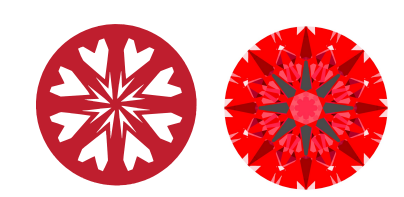
IGI LG664409147

This Laboratory Grown Diamond was created by Chemical Vapor Deposition (CVD) growth process. Type IIa



LIGHT PERFORMANCE REPORT

Light Performance Grade: **Exceptional**



Ideal-Scope representation

Low

Moderate

High

Superior

Exceptional

Light Performance

Brightness

Fire

Contrast

COLOR

D

E

F

G

H

I

J

Faint

Very Light

Light

CLARITY

IF

VVS<sup>1-2</sup>

VS<sup>1-2</sup>

SI<sup>1-2</sup>

I<sup>1-3</sup>

Internally Flawless

Very Very Slightly Included



Very Slightly Included


Slightly Included

Included

© IGI 2020, International Gemological Institute

FD - 10 20





November 12, 2024

IGI Report Number

Description

Shape and Cutting Style

Measurements

LG664409147

LABORATORY GROWN DIAMOND

ROUND BRILLIANT

10.38 - 10.44 X 6.30 MM

GRADING RESULTS

Carat Weight

Color Grade

Clarity Grade

Cut Grade

4.13 CARATS

E

VVS 2

IDEAL

ADDITIONAL GRADING INFORMATION

Polish

Symmetry

Fluorescence

Inscription(s)

Comments: HEARTS & ARROWS

This Laboratory Grown Diamond was created by Chemical Vapor Deposition (CVD) growth process. Type IIa

EXCELLENT

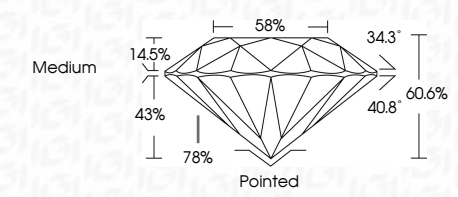
EXCELLENT

NONE

IGI LG664409147

IGI LG664409147

This Laboratory Grown Diamond was created by Chemical Vapor Deposition (CVD) growth process. Type IIa



IGI

November 12, 2024

IGI Report No LG664409147

ROUND BRILLIANT

10.38 - 10.44 X 6.30 MM

Carat Weight

Color Grade

Clarity Grade

Cut Grade

Depth

Table

Girdle

Culet

Polish

Symmetry

Fluorescence

Inscription(s)

Comments: HEARTS & ARROWS

This Laboratory Grown Diamond was created by Chemical Vapor Deposition (CVD) growth process. Type IIa

4.13 CARATS

E

VVS 2

IDEAL

60.6%

Medium

Pointed

EXCELLENT

EXCELLENT

NONE

IGI LG664409147

IGI LG664409147

This Laboratory Grown Diamond was created by Chemical Vapor Deposition (CVD) growth process. Type IIa