



ELECTRONIC COPY

LG663405794
Report verification at igi.org



November 18, 2024
IGI Report Number **LG663405794**

Description **LABORATORY GROWN DIAMOND**

Shape and Cutting Style **CUT CORNERED
RECTANGULAR MODIFIED
BRILLIANT**

Measurements **7.88 X 5.57 X 3.83 MM**

GRADING RESULTS

Carat Weight **1.52 CARAT**

Color Grade **FANCY INTENSE YELLOW**

Clarity Grade **VS 1**

November 18, 2024
IGI Report Number **LG663405794**
Description **LABORATORY GROWN DIAMOND**
Shape and Cutting Style **CUT CORNERED RECTANGULAR
MODIFIED BRILLIANT**
Measurements **7.88 X 5.57 X 3.83 MM**

GRADING RESULTS

Carat Weight **1.52 CARAT**

Color Grade **FANCY INTENSE YELLOW**

Clarity Grade **VS 1**

ADDITIONAL GRADING INFORMATION

Polish **EXCELLENT**

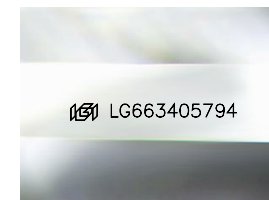
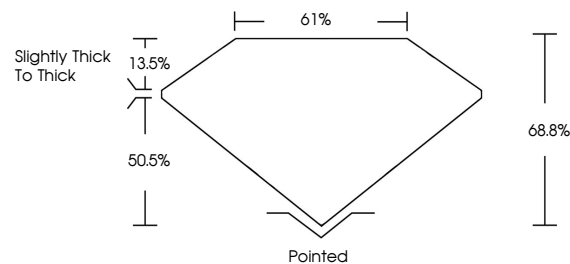
Symmetry **EXCELLENT**

Fluorescence **NONE**

Inscription(s) **IGI LG663405794**

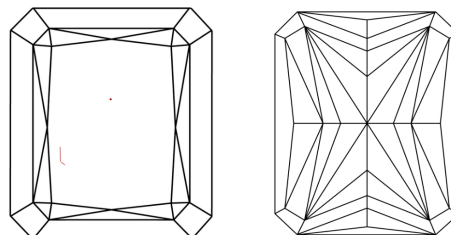
Comments: This Laboratory Grown Diamond was created by Chemical Vapor Deposition (CVD) growth process.

PROPORTIONS



Sample Image Used

CLARITY CHARACTERISTICS



KEY TO SYMBOLS

Red symbols indicate internal characteristics.
Green symbols indicate external characteristics.

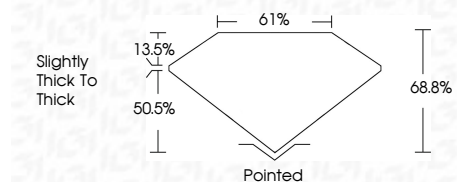
COLOR

D E F G H I J Faint Very Light Light

CLARITY

IF WS¹⁻² VS¹⁻² SI¹⁻² I¹⁻³

Internally Flawless Very Very Slightly Included Very Slightly Included Slightly Included Included



ADDITIONAL GRADING INFORMATION

Polish **EXCELLENT**

Symmetry **EXCELLENT**

Fluorescence **NONE**

Inscription(s) **IGI LG663405794**

Comments: This Laboratory Grown Diamond was created by Chemical Vapor Deposition (CVD) growth process.



IGI



November 18, 2024
IGI Report No. LG663405794
CUT CORNERED RECT. MODIFIED BRILLIANT
7.88 X 5.57 X 3.83 MM
1.52 CARAT
FANCY INTENSE YELLOW
VS 1
68.8%
61%
Slightly thick to thick
Pointed
EXCELLENT
EXCELLENT
NONE
IGI LG663405794
Comments: This Laboratory Grown Diamond was created by Chemical Vapor Deposition (CVD) growth process.