



ELECTRONIC COPY

LG663405695
Report verification at igi.org



November 18, 2024
IGI Report Number LG663405695
Description LABORATORY GROWN DIAMOND
Shape and Cutting Style CUT CORNERED RECTANGULAR MODIFIED BRILLIANT
Measurements 8.43 X 6.22 X 4.29 MM
GRADING RESULTS
Carat Weight 2.08 CARATS
Color Grade FANCY INTENSE YELLOW
Clarity Grade VS 2

LABORATORY GROWN DIAMOND REPORT

November 18, 2024
IGI Report Number LG663405695
Description LABORATORY GROWN DIAMOND
Shape and Cutting Style CUT CORNERED RECTANGULAR MODIFIED BRILLIANT
Measurements 8.43 X 6.22 X 4.29 MM

GRADING RESULTS

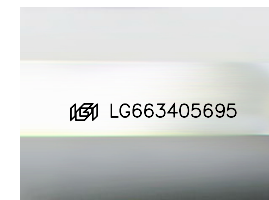
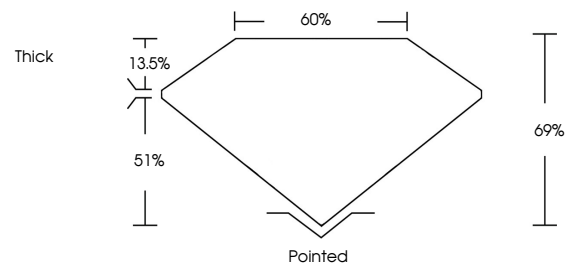
Carat Weight 2.08 CARATS
Color Grade FANCY INTENSE YELLOW
Clarity Grade VS 2

ADDITIONAL GRADING INFORMATION

Polish EXCELLENT
Symmetry EXCELLENT
Fluorescence NONE
Inscription(s) IGI LG663405695

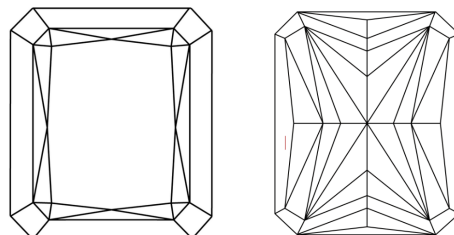
Comments: This Laboratory Grown Diamond was created by Chemical Vapor Deposition (CVD) growth process.

PROPORTIONS



Sample Image Used

CLARITY CHARACTERISTICS



KEY TO SYMBOLS

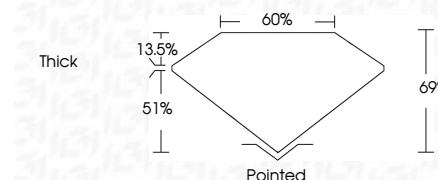
Red symbols indicate internal characteristics.
Green symbols indicate external characteristics.

COLOR

D E F G H I J Faint Very Light Light

CLARITY

IF WS 1-2 VS 1-2 SI 1-2 I 1-3
Internally Flawless Very Very Slightly Included Very Slightly Included Slightly Included Included



ADDITIONAL GRADING INFORMATION

Polish EXCELLENT
Symmetry EXCELLENT
Fluorescence NONE
Inscription(s) IGI LG663405695
Comments: This Laboratory Grown Diamond was created by Chemical Vapor Deposition (CVD) growth process.



November 18, 2024
IGI Report No. LG663405695
CUT CORNERED RECT. MODIFIED BRILLIANT
8.43 X 6.22 X 4.29 MM
2.08 CARATS
FANCY INTENSE YELLOW
VS 2
69%
60%
Thick
Pointed
EXCELLENT
EXCELLENT
NONE
IGI LG663405695
Comments: This Laboratory Grown Diamond was created by Chemical Vapor Deposition (CVD) growth process.