



ELECTRONIC COPY

LABORATORY GROWN DIAMOND REPORT

| | |
|-------------------------|--------------------------|
| November 20, 2024 | |
| IGI Report Number | LG663402974 |
| Description | LABORATORY GROWN DIAMOND |
| Shape and Cutting Style | CUSHION BRILLIANT |
| Measurements | 7.54 X 5.81 X 3.85 MM |

GRADING RESULTS

| | |
|---------------|------------|
| Carat Weight | 1.26 CARAT |
| Color Grade | E |
| Clarity Grade | VS 1 |

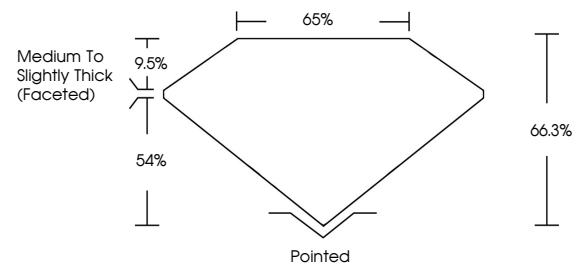
ADDITIONAL GRADING INFORMATION

| | |
|----------------|---|
| Polish | EXCELLENT |
| Symmetry | EXCELLENT |
| Fluorescence | NONE |
| Inscription(s) |  LG663402974 |

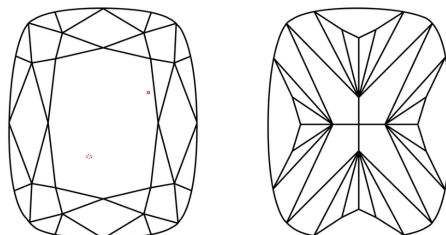
Comments: This Laboratory Grown Diamond was created by Chemical Vapor Deposition (CVD) growth process.
Type IIa

LG663402974
Report verification at igi.org

PROPORTIONS

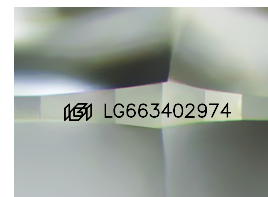


CLARITY CHARACTERISTICS



KEY TO SYMBOLS

Red symbols indicate internal characteristics.
Green symbols indicate external characteristics.



Sample Image Used

COLOR

D E F G H I J Faint Very Light Light

CLARITY

| IF | VS ¹⁻² | VS ¹⁻² | SI ¹⁻² | I ¹⁻³ |
|---------------------|-----------------------------|------------------------|-------------------|------------------|
| Internally Flawless | Very Very Slightly Included | Very Slightly Included | Slightly Included | Included |

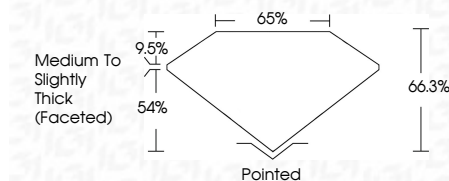
LABORATORY GROWN DIAMOND REPORT



| | |
|-------------------------|--------------------------|
| November 20, 2024 | |
| IGI Report Number | LG663402974 |
| Description | LABORATORY GROWN DIAMOND |
| Shape and Cutting Style | CUSHION BRILLIANT |
| Measurements | 7.54 X 5.81 X 3.85 MM |

GRADING RESULTS

| | |
|---------------|------------|
| Carat Weight | 1.26 CARAT |
| Color Grade | E |
| Clarity Grade | VS 1 |



ADDITIONAL GRADING INFORMATION

| | |
|---|-----------------------------|
| Polish | EXCELLENT |
| Symmetry | EXCELLENT |
| Fluorescence | NONE |
| Inscription(s) | 1631 LG663402974 |
| <p>Comments: This Laboratory Grown Diamond was created by Chemical Vapor Deposition (CVD) growth process.</p> <p>Type IIa</p> | |



© IGI 2020, International Gemological Institute

FD - 10 20

www.igi.org

THIS DOCUMENT WAS PRODUCED WITH THE FOLLOWING SECURITY MEASURES: SPECIAL DOCUMENT PAPER, INK SCREENS, WATERMARK, BACKGROUND DESIGNS, HOLOGRAM AND OTHER SECURITY FEATURES NOT LISTED AND DO EXCEED DOCUMENT SECURITY INDUSTRY GUIDELINE

November 20, 2024
GI Report No LG663402974
CUSHION BRILLIANT

| | | |
|-----------------------|---------------|-----------------------------------|
| 1.54 X 5.81 X 3.85 MM | Carat Weight | 1.26 CARAT |
| | Color Grade | E |
| | Clarity Grade | VS 1 |
| | Depth | 66.9% |
| | Table | 65% |
| | Grade | Medium To Slightly Thick (robbed) |
| | Culet | Pointed |
| | Polish | EXCELLENT |
| | Symmetry | EXCELLENT |
| | Fluorescence | NONE |
| | | 4m1c2459.002924 |

Comments:
This Laboratory Grown Diamond was
created by Chemical Vapor Deposition
(CVD) growth process.