



ELECTRONIC COPY

LG663402581
Report verification at igi.org



November 22, 2024
IGI Report Number **LG663402581**
Description **LABORATORY GROWN DIAMOND**
Shape and Cutting Style **RECTANGULAR CUSHION MIXED CUT**
Measurements **12.20 X 7.87 X 5.30 MM**
GRADING RESULTS
Carat Weight **5.11 CARATS**
Color Grade **F**
Clarity Grade **VVS 2**

November 22, 2024
IGI Report Number **LG663402581**
Description **LABORATORY GROWN DIAMOND**
Shape and Cutting Style **RECTANGULAR CUSHION MIXED CUT**
Measurements **12.20 X 7.87 X 5.30 MM**

GRADING RESULTS

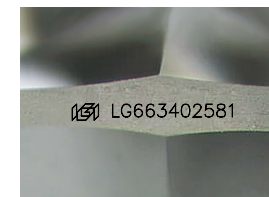
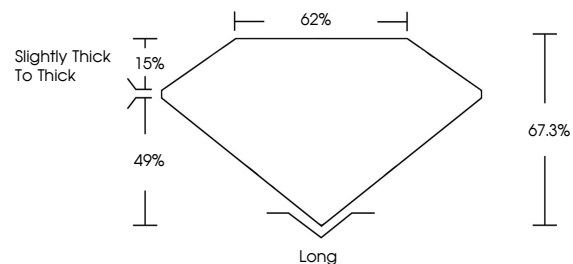
Carat Weight **5.11 CARATS**
Color Grade **F**
Clarity Grade **VVS 2**

ADDITIONAL GRADING INFORMATION

Polish **EXCELLENT**
Symmetry **EXCELLENT**
Fluorescence **NONE**
Inscription(s) **IGI LG663402581**

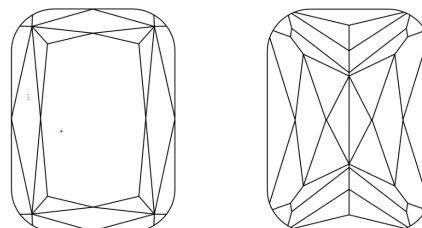
Comments: This Laboratory Grown Diamond was created by Chemical Vapor Deposition (CVD) growth process.
Type IIa

PROPORTIONS



Sample Image Used

CLARITY CHARACTERISTICS



KEY TO SYMBOLS

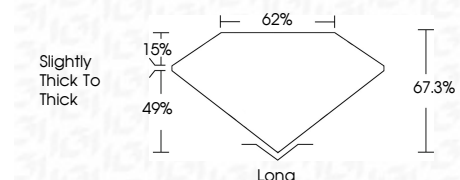
Red symbols indicate internal characteristics.
Green symbols indicate external characteristics.

COLOR

D E F G H I J Faint Very Light Light

CLARITY

IF	VS ¹⁻²	VS ¹⁻²	SI ¹⁻²	I ¹⁻³
Internally Flawless	Very Very Slightly Included	Very Slightly Included	Slightly Included	Included



ADDITIONAL GRADING INFORMATION

Polish **EXCELLENT**
Symmetry **EXCELLENT**
Fluorescence **NONE**
Inscription(s) **IGI LG663402581**
Comments: This Laboratory Grown Diamond was created by Chemical Vapor Deposition (CVD) growth process.
Type IIa



IGI



November 22, 2024
IGI Report No LG663402581
RECTANGULAR CUSHION MIXED CUT
12.20 X 7.87 X 5.30 MM
Carat Weight **5.11 CARATS**
Color Grade **F**
Clarity Grade **VVS 2**
Depth **67.3%**
Table **62%**
Girdle **Slightly Thick To Thick**
Culet **Long**
Polish **EXCELLENT**
Symmetry **EXCELLENT**
Fluorescence **NONE**
Inscription(s) **IGI LG663402581**
Comments: This Laboratory Grown Diamond was created by Chemical Vapor Deposition (CVD) growth process.
Type IIa