



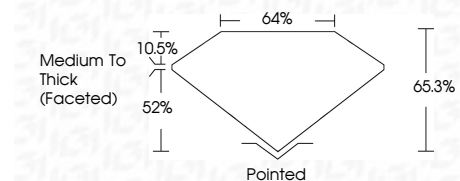
**ELECTRONIC COPY**

LG662491325  
Report verification at igi.org



November 18, 2024  
IGI Report Number **LG662491325**  
Description **LABORATORY GROWN DIAMOND**  
Shape and Cutting Style **CUSHION BRILLIANT**  
Measurements **7.02 X 5.45 X 3.56 MM**

**GRADING RESULTS**  
Carat Weight **1.01 CARAT**  
Color Grade **D**  
Clarity Grade **VS 1**



**ADDITIONAL GRADING INFORMATION**  
Polish **EXCELLENT**  
Symmetry **EXCELLENT**  
Fluorescence **NONE**  
Inscription(s) **IGI LG662491325**  
Comments: This Laboratory Grown Diamond was created by Chemical Vapor Deposition (CVD) growth process. Type IIa



November 18, 2024  
IGI Report No. LG662491325  
**CUSHION BRILLIANT**  
1.01 CARAT  
D  
VS 1  
65.3%  
52%  
10.5%  
64%  
Medium To Thick (Faceted)  
Pointed  
EXCELLENT  
EXCELLENT  
NONE  
IGI LG662491325  
Comments: This Laboratory Grown Diamond was created by Chemical Vapor Deposition (CVD) growth process. Type IIa

**LABORATORY GROWN DIAMOND REPORT**

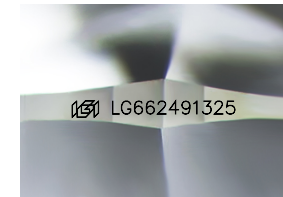
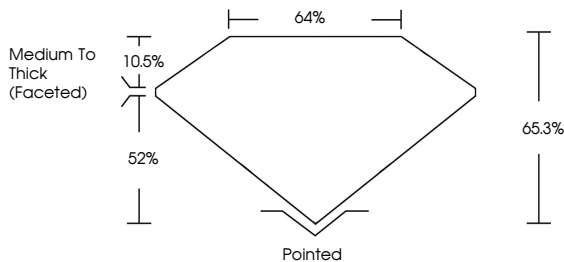
November 18, 2024  
IGI Report Number **LG662491325**  
Description **LABORATORY GROWN DIAMOND**  
Shape and Cutting Style **CUSHION BRILLIANT**  
Measurements **7.02 X 5.45 X 3.56 MM**

**GRADING RESULTS**  
Carat Weight **1.01 CARAT**  
Color Grade **D**  
Clarity Grade **VS 1**

**ADDITIONAL GRADING INFORMATION**  
Polish **EXCELLENT**  
Symmetry **EXCELLENT**  
Fluorescence **NONE**  
Inscription(s) **IGI LG662491325**

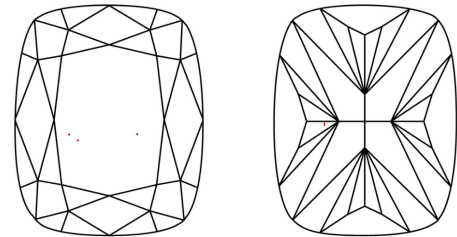
Comments: This Laboratory Grown Diamond was created by Chemical Vapor Deposition (CVD) growth process. Type IIa

**PROPORTIONS**



Sample Image Used

**CLARITY CHARACTERISTICS**



**KEY TO SYMBOLS**  
Red symbols indicate internal characteristics.  
Green symbols indicate external characteristics.

**COLOR**

D	E	F	G	H	I	J	Faint	Very Light	Light
---	---	---	---	---	---	---	-------	------------	-------

**CLARITY**

IF	VS <sup>1-2</sup>	VS <sup>1-2</sup>	SI <sup>1-2</sup>	I <sup>1-3</sup>
Internally Flawless	Very Very Slightly Included	Very Slightly Included	Slightly Included	Included

