



ELECTRONIC COPY

LABORATORY GROWN DIAMOND REPORT

November 16, 2024	
IGI Report Number	LG662483955
Description	LABORATORY GROWN DIAMOND
Shape and Cutting Style	LOZENGE MIXED CUT
Measurements	11.14 X 7.79 X 4.85 MM

GRADING RESULTS

Carat Weight	2.01 CARATS
Color Grade	E
Clarity Grade	VVS 1

ADDITIONAL GRADING INFORMATION

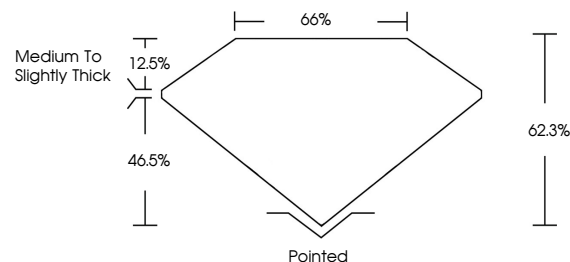
Polish	EXCELLENT
Symmetry	EXCELLENT
Fluorescence	NONE
Inscription(s)	15 LG662483955

Comments: As Grown - No indication of post-growth treatment.

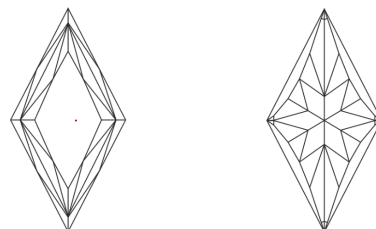
This Laboratory Grown Diamond was created by High Pressure High Temperature (HPHT) growth process.
Type II

LG662483955
Report verification at igi.org

PROPORTIONS

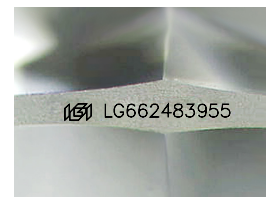


CLARITY CHARACTERISTICS



KEY TO SYMBOLS

Red symbols indicate internal characteristics.
Green symbols indicate external characteristics.



Sample Image Used

COLOR

D E F G H I J Faint Very Light Light

CLARITY

IF VWS¹⁻² VS¹⁻² SI¹⁻² I¹⁻³

Internally Flawless	Very Very Slightly Included	Very Slightly Included	Slightly Included	Included
------------------------	--------------------------------	---------------------------	----------------------	----------

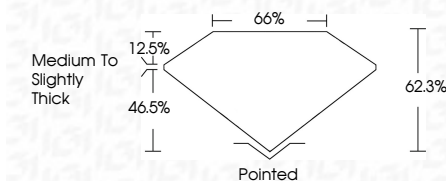
LABORATORY GROWN DIAMOND REPORT



November 16, 2024	
IGI Report Number	LG662483955
Description	LABORATORY GROWN DIAMOND
Shape and Cutting Style	LOZENGE MIXED CUT
Measurements	11.14 X 7.79 X 4.85 MM

GRADING RESULTS

Carat Weight	2.01 CARATS
Color Grade	E
Clarity Grade	VVS 1



ADDITIONAL GRADING INFORMATION

Polish	EXCELLENT
Symmetry	EXCELLENT
Fluorescence	NONE
Inscription(s)	 LG662483955

Comments: As Grown - No indication of post-growth treatment.

This Laboratory Grown Diamond was created by High Pressure High Temperature (HPHT) growth process.
Type II



© IGI 2020, International Gemological Institute

FD - 10 20

www.igi.org



THIS DOCUMENT WAS PRODUCED WITH THE FOLLOWING SECURITY MEASURES: SPECIAL DOCUMENT PAPER, INK SCREENS, WATERMARK, BACKGROUND DESIGNS, HOLOGRAM AND OTHER SECURITY FEATURES NOT LISTED AND DO EXCEED DOCUMENT SECURITY INDUSTRY GUIDELINE

November 16, 2024
GI Report No LG662483955
OTENGE MIXED CUIT

11.14 X 7.79 X 4.85 MM	2.01 CARATS	
Carat Weight		
Color Grade		
Clarity Grade	VVS 1	
Depth	62.3%	
Table	65%	
Grade	Medium To Slightly Thick	
Culet	Pointed	
Polish	EXCELLENT	
Symmetry	EXCELLENT	
Fluorescence	NONE	
Comments	see 1 color response	

Comments:
As Grown - No indication of post-growth treatment.
This Laboratory Grown Diamond was created by High Pressure High Temperature (HPHT) growth process.