



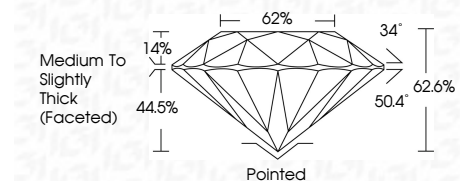
ELECTRONIC COPY

LG662483162
Report verification at igi.org



November 13, 2024
IGI Report Number LG662483162
Description LABORATORY GROWN DIAMOND
Shape and Cutting Style ROUND MIXED CUT
Measurements 8.64 - 8.63 X 5.40 MM

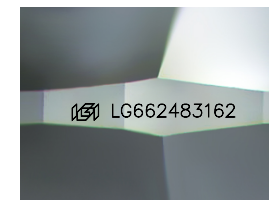
GRADING RESULTS
Carat Weight 2.86 CARATS
Color Grade E
Clarity Grade VVS 2



ADDITIONAL GRADING INFORMATION
Polish EXCELLENT
Symmetry EXCELLENT
Fluorescence NONE
Inscription(s) IGI LG662483162
Comments: This Laboratory Grown Diamond was created by Chemical Vapor Deposition (CVD) growth process. Type IIa

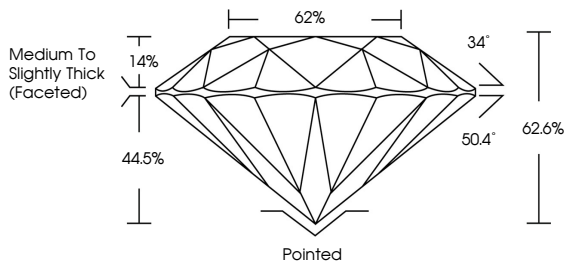


November 13, 2024
IGI Report No LG662483162
ROUND MIXED CUT
2.86 CARATS E
Carat Weight 2.86 CARATS
Color Grade E
Clarity Grade VVS 2
Depth 62.6%
Table 62%
Girdle Medium to Slightly Thick (Faceted)
Culet Pointed
Polish EXCELLENT
Symmetry EXCELLENT
Fluorescence NONE
Inscription(s) IGI LG662483162
Comments: This Laboratory Grown Diamond was created by Chemical Vapor Deposition (CVD) growth process. Type IIa

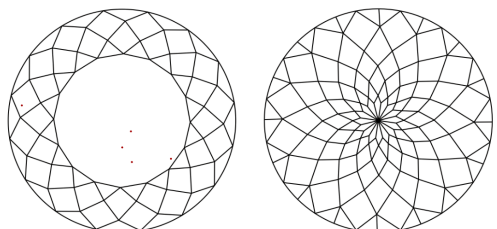


Sample Image Used

PROPORTIONS



CLARITY CHARACTERISTICS



KEY TO SYMBOLS
Red symbols indicate internal characteristics.
Green symbols indicate external characteristics.

Table with 5 columns: D, E, F, G, H, I, J, Faint, Very Light, Light

Table with 5 columns: IF, VS 1-2, VS 1-2, SI 1-2, I 1-3

Table with 5 columns: Internally Flawless, Very Very Slightly Included, Very Slightly Included, Slightly Included, Included

