

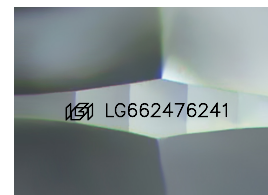
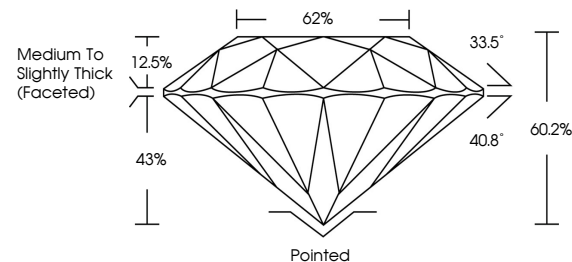


ELECTRONIC COPY

LABORATORY GROWN DIAMOND REPORT

LG662476241
Report verification at igi.org

PROPORTIONS



Sample Image Used

COLOR

D E F G H I J Faint Very Light Light

CLARITY

IF	VVS ¹⁻²	VS ¹⁻²	SI ¹⁻²	I ¹⁻³
Internally Flawless	Very Very Slightly Included	Very Slightly Included	Slightly Included	Included



© IGI 2020, International Gemological Institute

FD - 10 20

www.igi.org

LABORATORY GROWN DIAMOND REPORT



October 28, 2024

IGI Report Number **LG662476241**Description **LABORATORY GROWN DIAMOND**Shape and Cutting Style **ROUND BRILLIANT**

Measurements 7.52 - 7.54 X 4.53 MM

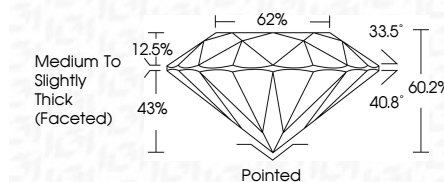
GRADING RESULTS

Carat Weight 1.60 CARAT

Color Grade **E**

Clarity Grade VS 2

Cut Grade **EXCELLENT**



ADDITIONAL GRADING INFORMATION

Polish **EXCELLENT**Symmetry **EXCELLENT**Fluorescence **NONE**Inscription(s)  LG662476241

Comments: This Laboratory Grown Diamond was created by Chemical Vapor Deposition (CVD) growth process.
Type IIa



October 28, 2024	Color Weight	1.60 CARAT
GI Report No. G6607/0241	Color Grade	E
ROUND BRILLIANT	Clarity Grade	VS 2
52 - 75.4 X 4.83 MM	Clarity Grade	EXCELLENT
	Depth	60.2%
	Table	92%
	Girdle	Medium to Slightly Thick (6-cored)
	Culet	Pointed
	Polish	EXCELLENT
	Symmetry	EXCELLENT
	Fluorescence	NONE
	Inscriptions(s)	6891G6607/0241
Comments: This Laboratory Grown Diamond was created by Chemical Vapor Deposition (CVD) growth process. Type IIa		