



ELECTRONIC COPY

LABORATORY GROWN DIAMOND REPORT

October 27, 2024
IGI Report Number LG662454415
Description LABORATORY GROWN DIAMOND
Shape and Cutting Style EMERALD CUT
Measurements 7.42 X 5.22 X 3.45 MM

GRADING RESULTS

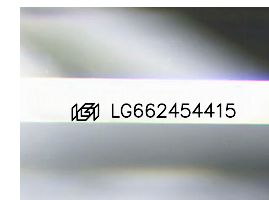
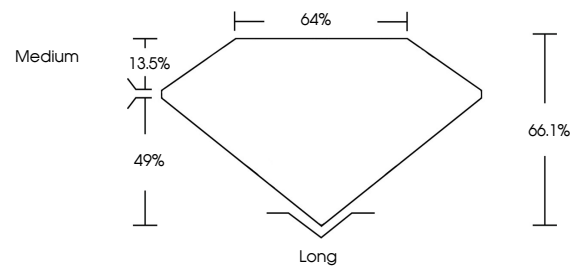
Carat Weight 1.31 CARAT
Color Grade E
Clarity Grade VS 2

ADDITIONAL GRADING INFORMATION

Polish EXCELLENT
Symmetry EXCELLENT
Fluorescence NONE
Inscription(s) IGI LG662454415

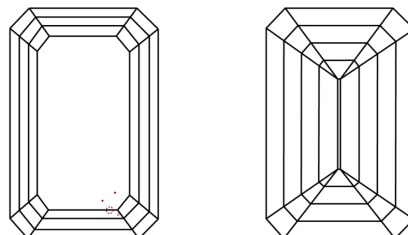
Comments: This Laboratory Grown Diamond was created by Chemical Vapor Deposition (CVD) growth process.
Type IIa

PROPORTIONS



Sample Image Used

CLARITY CHARACTERISTICS



KEY TO SYMBOLS

Red symbols indicate internal characteristics.
Green symbols indicate external characteristics.

COLOR

D E F G H I J Faint Very Light Light

CLARITY

IF WS¹⁻² VS¹⁻² SI¹⁻² I¹⁻³
Internally Flawless Very Very Slightly Included Very Slightly Included Slightly Included Included



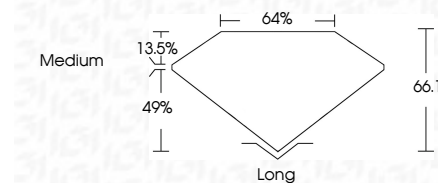
October 27, 2024
IGI Report Number LG662454415
Description LABORATORY GROWN DIAMOND
Shape and Cutting Style EMERALD CUT
Measurements 7.42 X 5.22 X 3.45 MM

GRADING RESULTS

Carat Weight 1.31 CARAT
Color Grade E
Clarity Grade VS 2

ADDITIONAL GRADING INFORMATION

Polish EXCELLENT
Symmetry EXCELLENT
Fluorescence NONE
Inscription(s) IGI LG662454415
Comments: This Laboratory Grown Diamond was created by Chemical Vapor Deposition (CVD) growth process.
Type IIa



IGI



October 27, 2024
IGI Report No. LG662454415
EMERALD CUT
7.42 X 5.22 X 3.45 MM
1.31 CARAT
Color Grade E
Clarity Grade VS 2
Depth 66.1%
Table 64%
Girdle Medium
Culet Long
Polish EXCELLENT
Symmetry EXCELLENT
Fluorescence NONE
Inscription(s) IGI LG662454415
Comments: This Laboratory Grown Diamond was created by Chemical Vapor Deposition (CVD) growth process.
Type IIa