



# INTERNATIONAL GEMOLOGICAL INSTITUTE

ELECTRONIC COPY

LG662449217

## LABORATORY GROWN DIAMOND REPORT

October 28, 2024

IGI Report Number

LG662449217

Description

LABORATORY GROWN DIAMOND

Shape and Cutting Style

PRINCESS CUT

Measurements

4.38 X 4.23 X 2.98 MM

### GRADING RESULTS

Carat Weight

0.50 CARAT

Color Grade

E

Clarity Grade

VS 1

### ADDITIONAL GRADING INFORMATION

Polish

EXCELLENT

Symmetry

VERY GOOD

Fluorescence

NONE

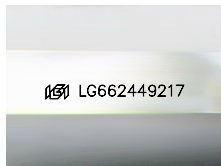
Inscription(s)

IGI LG662449217

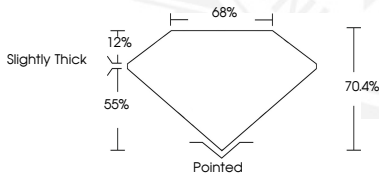
Comments: As Grown - No indication of post-growth treatment.

This Laboratory Grown Diamond was created by High Pressure High Temperature (HPHT) growth process.

Type II



Sample Image Used



October 28, 2024

IGI Report Number LG662449217

PRINCESS CUT

LABORATORY GROWN DIAMOND

4.38 X 4.23 X 2.98 MM

Carat Weight 0.50 CARAT

Color Grade E

Clarity Grade VS 1

Polish EXCELLENT

Symmetry VERY GOOD

Fluorescence NONE

Inscription(s) IGI LG662449217

Comments: As Grown - No indication of post-growth treatment. This Laboratory Grown Diamond was created by High Pressure High Temperature (HPHT) growth process. Type II



October 28, 2024

IGI Report Number LG662449217

PRINCESS CUT

LABORATORY GROWN DIAMOND

4.38 X 4.23 X 2.98 MM

Carat Weight 0.50 CARAT

Color Grade E

Clarity Grade VS 1

Polish EXCELLENT

Symmetry VERY GOOD

Fluorescence NONE

Inscription(s) IGI LG662449217

Comments: As Grown - No indication of post-growth treatment. This Laboratory Grown Diamond was created by High Pressure High Temperature (HPHT) growth process. Type II



THIS DOCUMENT WAS PRODUCED WITH THE FOLLOWING SECURITY MEASURES: SPECIAL DOCUMENT PAPER, INK SCREENS, WATERMARK, BACKGROUND DESIGNS, HOLOGRAM AND OTHER SECURITY FEATURES NOT LISTED AND DO EXCEED DOCUMENT SECURITY INDUSTRY GUIDELINES.

For terms & conditions and to verify this report, please visit [www.igi.org](http://www.igi.org)