



ELECTRONIC COPY

LG662449182
Report verification at igi.org



December 4, 2024

IGI Report Number **LG662449182**

Description **LABORATORY GROWN DIAMOND**

Shape and Cutting Style **EMERALD CUT**

Measurements **10.53 X 7.63 X 5.29 MM**

GRADING RESULTS

Carat Weight **4.50 CARATS**

Color Grade **FANCY VIVID RED**

Clarity Grade **VS 1**

LABORATORY GROWN DIAMOND REPORT

December 4, 2024

IGI Report Number **LG662449182**

Description **LABORATORY GROWN DIAMOND**

Shape and Cutting Style **EMERALD CUT**

Measurements **10.53 X 7.63 X 5.29 MM**

GRADING RESULTS

Carat Weight **4.50 CARATS**

Color Grade **FANCY VIVID RED**

Clarity Grade **VS 1**

ADDITIONAL GRADING INFORMATION

Polish **EXCELLENT**

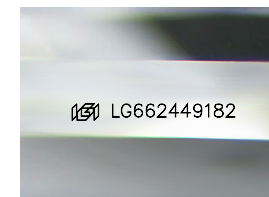
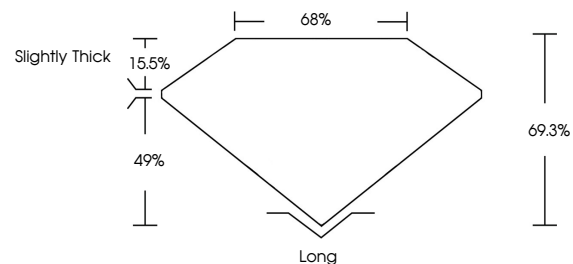
Symmetry **EXCELLENT**

Fluorescence **SLIGHT**

Inscription(s) **LG662449182**

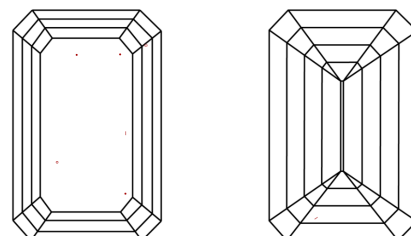
Comments: This Laboratory Grown Diamond was created by Chemical Vapor Deposition (CVD) growth process. Indications of post-growth treatment.

PROPORTIONS



Sample Image Used

CLARITY CHARACTERISTICS



KEY TO SYMBOLS

Red symbols indicate internal characteristics.
Green symbols indicate external characteristics.

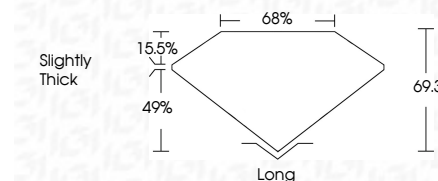
COLOR

D E F G H I J Faint Very Light Light

CLARITY

IF WS¹⁻² VS¹⁻² SI¹⁻² I¹⁻³

Internally Flawless Very Very Slightly Included Very Slightly Included Slightly Included Included



ADDITIONAL GRADING INFORMATION

Polish **EXCELLENT**

Symmetry **EXCELLENT**

Fluorescence **SLIGHT**

Inscription(s) **LG662449182**

Comments: This Laboratory Grown Diamond was created by Chemical Vapor Deposition (CVD) growth process. Indications of post-growth treatment.



December 4, 2024
IGI Report No LG662449182
EMERALD CUT

4.50 CARATS
Carat Weight
FANCY VIVID RED
Color Grade

VS 1
Clarity Grade
69.3%
Table
49%
Depth
Slightly Thick
Girdle

Long
Culet
EXCELLENT
Polish
EXCELLENT
Symmetry
SLIGHT
Fluorescence
IGI LG662449182
Inscription(s)

Comments: This Laboratory Grown Diamond was created by Chemical Vapor Deposition (CVD) growth process. Indications of post-growth treatment.