



**ELECTRONIC COPY**

LG662445409  
Report verification at igi.org



November 16, 2024  
IGI Report Number **LG662445409**  
Description **LABORATORY GROWN DIAMOND**  
Shape and Cutting Style **HEART MODIFIED BRILLIANT**  
Measurements **9.22 X 9.85 X 5.55 MM**

**GRADING RESULTS**

Carat Weight **3.60 CARATS**  
Color Grade **FANCY VIVID PINK**  
Clarity Grade **VS 1**

November 16, 2024  
IGI Report Number **LG662445409**  
Description **LABORATORY GROWN DIAMOND**  
Shape and Cutting Style **HEART MODIFIED BRILLIANT**  
Measurements **9.22 X 9.85 X 5.55 MM**

**GRADING RESULTS**

Carat Weight **3.60 CARATS**  
Color Grade **FANCY VIVID PINK**  
Clarity Grade **VS 1**

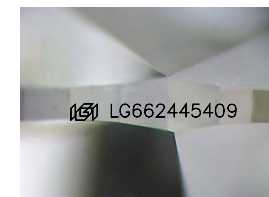
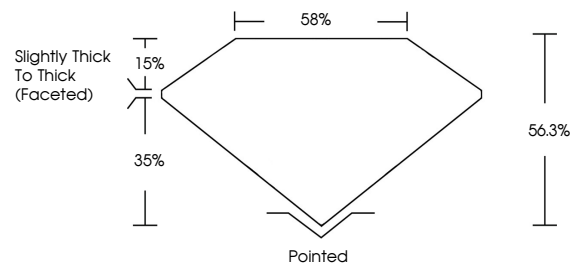
**ADDITIONAL GRADING INFORMATION**

Polish **EXCELLENT**  
Symmetry **EXCELLENT**  
Fluorescence **SLIGHT**  
Inscription(s) **LG662445409**

Comments: This Laboratory Grown Diamond was created by Chemical Vapor Deposition (CVD) growth process. Indications of post-growth treatment.

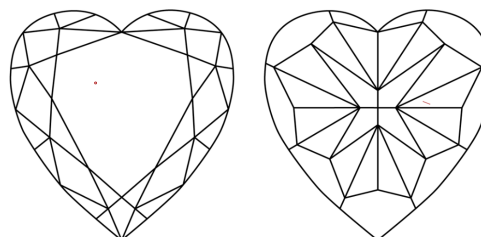
Secondary color: Brown

**PROPORTIONS**



Sample Image Used

**CLARITY CHARACTERISTICS**



**KEY TO SYMBOLS**

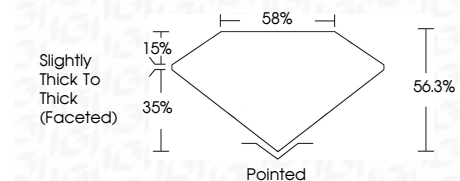
Red symbols indicate internal characteristics.  
Green symbols indicate external characteristics.

**COLOR**

D E F G H I J Faint Very Light Light

**CLARITY**

IF	VS <sup>1-2</sup>	VS <sup>1-2</sup>	SI <sup>1-2</sup>	I <sup>1-3</sup>
Internally Flawless	Very Very Slightly Included	Very Slightly Included	Slightly Included	Included



**ADDITIONAL GRADING INFORMATION**

Polish **EXCELLENT**  
Symmetry **EXCELLENT**  
Fluorescence **SLIGHT**  
Inscription(s) **LG662445409**  
Comments: This Laboratory Grown Diamond was created by Chemical Vapor Deposition (CVD) growth process. Indications of post-growth treatment.  
Secondary color: Brown



November 16, 2024  
IGI Report No **LG662445409**  
**HEART MODIFIED BRILLIANT**  
9.22 X 9.85 X 5.55 MM  
3.60 CARATS  
FANCY VIVID PINK  
VS 1  
56.3%  
35%  
Slightly Thick To Thick (Faceted)  
Pointed  
EXCELLENT  
EXCELLENT  
SLIGHT  
 **LG662445409**  
Comments: This Laboratory Grown Diamond was created by Chemical Vapor Deposition (CVD) growth process. Indications of post-growth treatment. Secondary color: Brown