



ELECTRONIC COPY

LG662445397
Report verification at igi.org



November 15, 2024
IGI Report Number **LG662445397**

Description **LABORATORY GROWN DIAMOND**

Shape and Cutting Style **SQUARE EMERALD CUT**

Measurements **8.04 X 7.94 X 5.41 MM**

GRADING RESULTS

Carat Weight **3.26 CARATS**

Color Grade **FANCY INTENSE PINK**

Clarity Grade **VS 1**

November 15, 2024
IGI Report Number **LG662445397**
Description **LABORATORY GROWN DIAMOND**
Shape and Cutting Style **SQUARE EMERALD CUT**
Measurements **8.04 X 7.94 X 5.41 MM**

GRADING RESULTS

Carat Weight **3.26 CARATS**

Color Grade **FANCY INTENSE PINK**

Clarity Grade **VS 1**

ADDITIONAL GRADING INFORMATION

Polish **EXCELLENT**

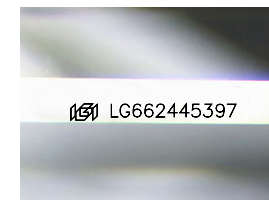
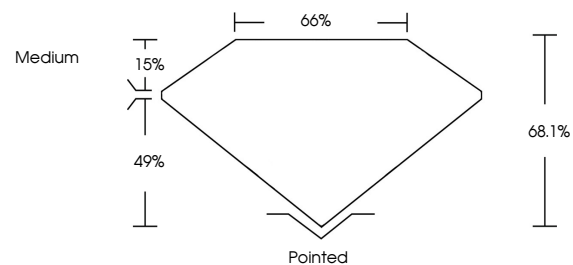
Symmetry **EXCELLENT**

Fluorescence **SLIGHT**

Inscription(s) **LG662445397**

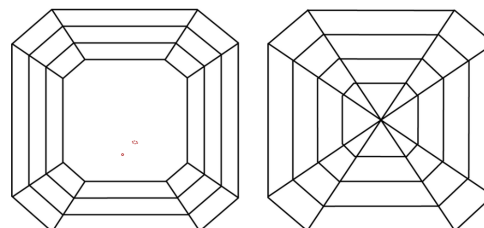
Comments: This Laboratory Grown Diamond was created by Chemical Vapor Deposition (CVD) growth process. Indications of post-growth treatment.

PROPORTIONS



Sample Image Used

CLARITY CHARACTERISTICS



KEY TO SYMBOLS

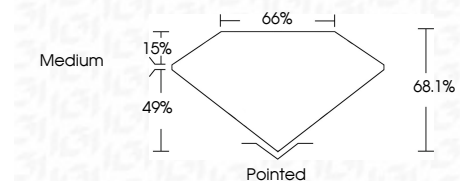
Red symbols indicate internal characteristics.
Green symbols indicate external characteristics.

COLOR

D E F G H I J Faint Very Light Light

CLARITY

IF	WS ¹⁻²	VS ¹⁻²	SI ¹⁻²	I ¹⁻³
Internally Flawless	Very Very Slightly Included	Very Slightly Included	Slightly Included	Included



ADDITIONAL GRADING INFORMATION

Polish **EXCELLENT**

Symmetry **EXCELLENT**

Fluorescence **SLIGHT**

Inscription(s) **LG662445397**

Comments: This Laboratory Grown Diamond was created by Chemical Vapor Deposition (CVD) growth process. Indications of post-growth treatment.



IGI



November 15, 2024
IGI Report No **LG662445397**
SQUARE EMERALD CUT

3.26 CARATS
Carat Weight
FANCY INTENSE PINK
Color Grade

VS 1
Clarity Grade
68.1%
Depth
65%
Table
Medium
Girdle

Pointed
Culet
EXCELLENT
Polish
EXCELLENT
Symmetry
SLIGHT
Fluorescence
Inscription(s) **LG662445397**

Comments: This Laboratory Grown Diamond was created by Chemical Vapor Deposition (CVD) growth process. Indications of post-growth treatment.