



ELECTRONIC COPY

LABORATORY GROWN DIAMOND REPORT

November 22, 2024	
IGI Report Number	LG662432807
Description	LABORATORY GROWN DIAMOND
Shape and Cutting Style	CUT CORNERED RECTANGULAR MODIFIED BRILLIANT
Measurements	7.30 X 4.78 X 3.13 MM

GRADING RESULTS

Carat Weight	1.02 CARAT
Color Grade	FANCY VIVID PINK
Clarity Grade	VVS 2

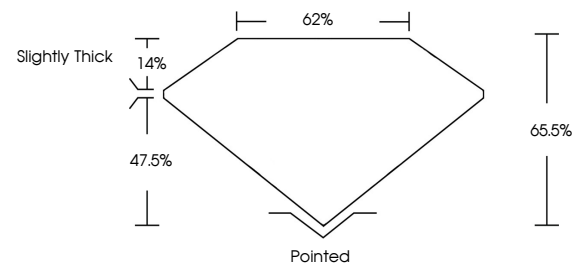
ADDITIONAL GRADING INFORMATION

Polish	EXCELLENT
Symmetry	EXCELLENT
Fluorescence	SLIGHT
Inscription(s)	16 LG662432807

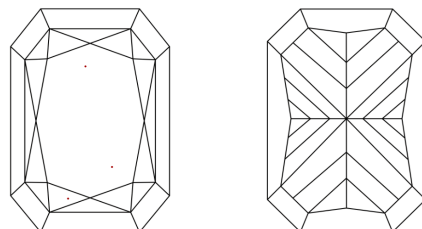
Comments: This Laboratory Grown Diamond was created by Chemical Vapor Deposition (CVD) growth process.
Indications of post-growth treatment.

LG662432807
Report verification at igi.org

PROPORTIONS

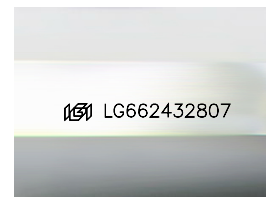


CLARITY CHARACTERISTICS



KEY TO SYMBOLS

Red symbols indicate internal characteristics.
Green symbols indicate external characteristics.



Sample Image Used

COLOR

D E F G H I J Faint Very Light Light

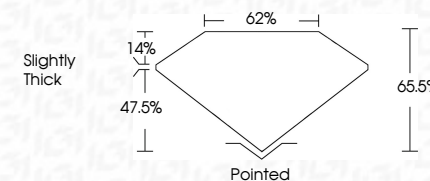
CLARITY

IF	VS ¹⁻²	VS ¹⁻²	SI ¹⁻²	I ¹⁻³
Internally Flawless	Very Very Slightly Included	Very Slightly Included	Slightly Included	Included

LABORATORY GROWN DIAMOND REPORT



November 22, 2024	
IGI Report Number	LG662432807
Description	LABORATORY GROWN DIAMOND
Shape and Cutting Style	CUT CORNERED RECTANGULAR MODIFIED BRILLIANT
Measurements	7.30 X 4.78 X 3.13 MM
GRADING RESULTS	
Carat Weight	1.02 CARAT
Color Grade	FANCY VIVID PINK
Clarity Grade	VVS 2



ADDITIONAL GRADING INFORMATION

Polish	EXCELLENT
Symmetry	EXCELLENT
Fluorescence	SLIGHT
Inscription(s)	(LS) LG662432807
<p>Comments: This Laboratory Grown Diamond was created by Chemical Vapor Deposition (CVD) growth process.</p> <p>Indications of post-growth treatment.</p>	



© IGI 2020, International Gemological Institute

FD - 10 20

www.igi.org

THIS DOCUMENT WAS PRODUCED WITH THE FOLLOWING SECURITY MEASURES: SPECIAL DOCUMENT PAPER, INK SCREENS, WATERMARK, BACKGROUND DESIGNS, HOLOGRAM AND OTHER SECURITY FEATURES NOT LISTED AND DO EXCEED DOCUMENT SECURITY INDUSTRY GUIDELINES

November 22, 2024	
SJ Report No. LG64682807	
GUT CORNERED RECT. MODIFIED BRILLIANT	
3.90 X 4.78 X 3.13 MM	
Carat Weight	1.02 CARAT
Color Grade	FANCY VIVID PINK
Clarity Grade	VVS 2
Cut	EXCELLENT
Depth	64.5%
Table	62%
Girdle	Slightly Thick
Culet	Pointed
Polish	EXCELLENT
Symmetry	EXCELLENT
Fluorescence	SLIGHT
Inscriptions(s)	#691 LG64682807

Comments:

The Laboratory Grown Diamond was
 subjected to Laser Vapor Deposition
 (LVD) growth process.
 Indications of post-growth treatment.