



ELECTRONIC COPY

LG662422878
Report verification at igi.org



November 16, 2024

IGI Report Number **LG662422878**

Description **LABORATORY GROWN DIAMOND**

Shape and Cutting Style **CUT CORNERED
RECTANGULAR MODIFIED
BRILLIANT**

Measurements **7.83 X 5.40 X 3.83 MM**

GRADING RESULTS

Carat Weight **1.54 CARAT**

Color Grade **FANCY YELLOW**

Clarity Grade **VS 1**

LABORATORY GROWN DIAMOND REPORT

November 16, 2024

IGI Report Number **LG662422878**

Description **LABORATORY GROWN DIAMOND**

Shape and Cutting Style **CUT CORNERED RECTANGULAR
MODIFIED BRILLIANT**

Measurements **7.83 X 5.40 X 3.83 MM**

GRADING RESULTS

Carat Weight **1.54 CARAT**

Color Grade **FANCY YELLOW**

Clarity Grade **VS 1**

ADDITIONAL GRADING INFORMATION

Polish **EXCELLENT**

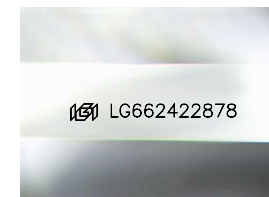
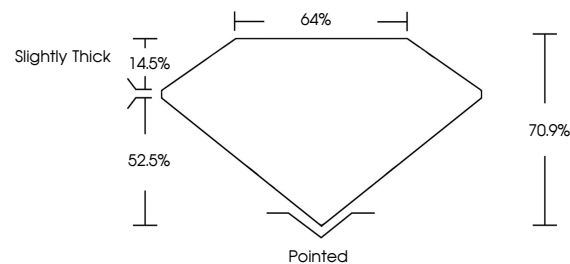
Symmetry **EXCELLENT**

Fluorescence **NONE**

Inscription(s) **IGI LG662422878**

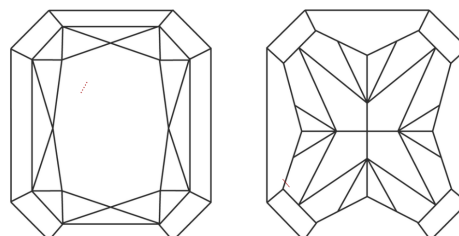
Comments: This Laboratory Grown Diamond was created by Chemical Vapor Deposition (CVD) growth process.

PROPORTIONS



Sample Image Used

CLARITY CHARACTERISTICS



KEY TO SYMBOLS

Red symbols indicate internal characteristics.
Green symbols indicate external characteristics.

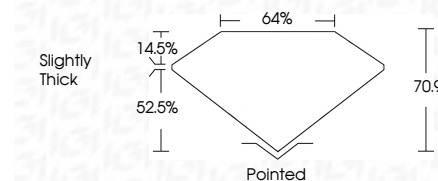
COLOR

D E F G H I J Faint Very Light Light

CLARITY

IF WS¹⁻² VS¹⁻² SI¹⁻² I¹⁻³

Internally Flawless Very Very Slightly Included Very Slightly Included Slightly Included Included



ADDITIONAL GRADING INFORMATION

Polish **EXCELLENT**

Symmetry **EXCELLENT**

Fluorescence **NONE**

Inscription(s) **IGI LG662422878**

Comments: This Laboratory Grown Diamond was created by Chemical Vapor Deposition (CVD) growth process.



IGI



November 16, 2024	IGI Report No. LG662422878	CUT CORNERED RECT. MODIFIED BRILLIANT
7.83 X 5.40 X 3.83 MM	1.54 CARAT	FANCY YELLOW
	Color Grade	VS 1
	Clarity Grade	70.9% 64%
	Table	Slightly Thick
	Graile	Pointed
	Culet	EXCELLENT
	Polish	EXCELLENT
	Symmetry	NONE
	Fluorescence	IGI LG662422878
	Inscription(s)	

Comments: This Laboratory Grown Diamond was created by Chemical Vapor Deposition (CVD) growth process.