



ELECTRONIC COPY

LG662414555
Report verification at igi.org



November 12, 2024
IGI Report Number **LG662414555**
Description **LABORATORY GROWN DIAMOND**
Shape and Cutting Style **EMERALD CUT**
Measurements **6.89 X 4.79 X 3.25 MM**
GRADING RESULTS
Carat Weight **1.08 CARAT**
Color Grade **FANCY PINK**
Clarity Grade **VS 1**

LABORATORY GROWN DIAMOND REPORT

November 12, 2024
IGI Report Number **LG662414555**
Description **LABORATORY GROWN DIAMOND**
Shape and Cutting Style **EMERALD CUT**
Measurements **6.89 X 4.79 X 3.25 MM**

GRADING RESULTS

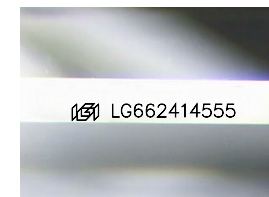
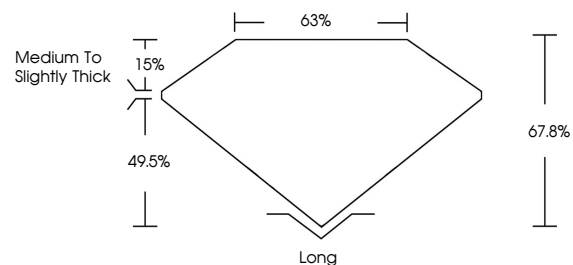
Carat Weight **1.08 CARAT**
Color Grade **FANCY PINK**
Clarity Grade **VS 1**

ADDITIONAL GRADING INFORMATION

Polish **EXCELLENT**
Symmetry **EXCELLENT**
Fluorescence **SLIGHT**
Inscription(s) **LG662414555**

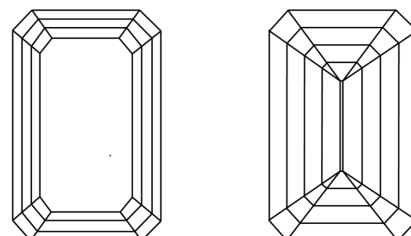
Comments: This Laboratory Grown Diamond was created by Chemical Vapor Deposition (CVD) growth process.
Indications of post-growth treatment.

PROPORTIONS



Sample Image Used

CLARITY CHARACTERISTICS



KEY TO SYMBOLS

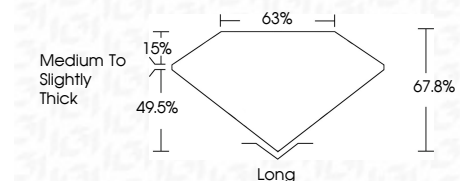
Red symbols indicate internal characteristics.
Green symbols indicate external characteristics.

COLOR

D E F G H I J Faint Very Light Light

CLARITY

IF	VS ¹⁻²	VS ¹⁻²	SI ¹⁻²	I ¹⁻³
Internally Flawless	Very Very Slightly Included	Very Slightly Included	Slightly Included	Included



ADDITIONAL GRADING INFORMATION

Polish **EXCELLENT**
Symmetry **EXCELLENT**
Fluorescence **SLIGHT**
Inscription(s) **LG662414555**
Comments: This Laboratory Grown Diamond was created by Chemical Vapor Deposition (CVD) growth process.
Indications of post-growth treatment.



November 12, 2024
IGI Report No **LG662414555**
EMERALD CUT
1.08 CARAT
FANCY PINK
Carat Weight **VS 1**
Color Grade **FANCY PINK**
Clarity Grade **VS 1**
Depth **67.8%**
Table **63%**
Girdle **Medium to Slightly Thick**
Culet **Long**
Polish **EXCELLENT**
Symmetry **EXCELLENT**
Fluorescence **SLIGHT**
Inscription(s) **LG662414555**

Comments: This Laboratory Grown Diamond was created by Chemical Vapor Deposition (CVD) growth process.
Indications of post-growth treatment.