



**ELECTRONIC COPY**

## LABORATORY GROWN DIAMOND REPORT

October 20, 2024	
IGI Report Number	LG660467190
Description	LABORATORY GROWN DIAMOND
Shape and Cutting Style	CUSHION BRILLIANT
Measurements	8.35 X 6.72 X 4.37 MM

## GRADING RESULTS

Carat Weight	1.91 CARAT
Color Grade	D
Clarity Grade	VS 1

### ADDITIONAL GRADING INFORMATION

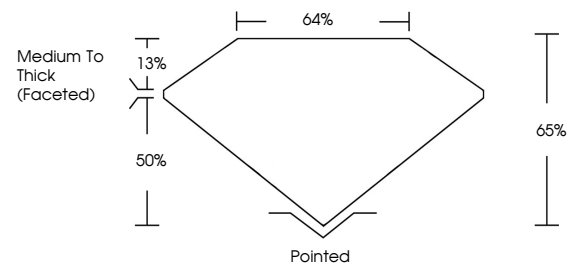
Polish	EXCELLENT
Symmetry	EXCELLENT
Fluorescence	NONE
Inscription(s)	151 LG660467190

Comments: As Grown - No indication of post-growth treatment.

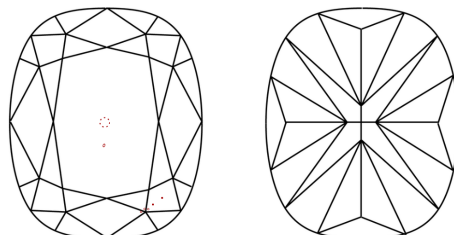
This Laboratory Grown Diamond was created by High Pressure High Temperature (HPHT) growth process.  
Type II

LG660467190  
Report verification at [igi.org](https://igi.org)

## PROPORTIONS

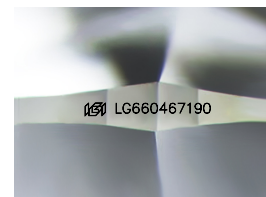


## CLARITY CHARACTERISTICS



### KEY TO SYMBOLS

Red symbols indicate internal characteristics.  
Green symbols indicate external characteristics.



Sample Image Used

## COLOR

D E F G H I J Faint Very Light Light

## CLARITY

IF	VVS <sup>1,2</sup>	VS <sup>1,2</sup>	SI <sup>1,2</sup>	I <sup>1,3</sup>
Internally Flawless	Very Very Slightly Included	Very Slightly Included	Slightly Included	Included



© IGI 2020, International Gemological Institute

FD - 10 20

**www.igi.org**

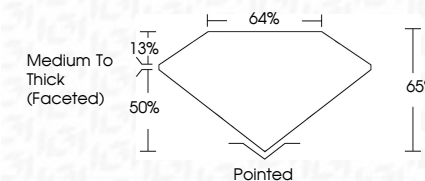
LABORATORY GROWN DIAMOND REPORT



October 20, 2024	
IGI Report Number	LG660467190
Description	LABORATORY GROWN DIAMOND
Shape and Cutting Style	CUSHION BRILLIANT
Measurements	8.35 X 6.72 X 4.37 MM

## GRADING RESULTS

Carat Weight	1.91 CARAT
Color Grade	D
Clarity Grade	VS 1



### ADDITIONAL GRADING INFORMATION

Polish	EXCELLENT
Symmetry	EXCELLENT
Fluorescence	NONE
Inscription(s)	(15) LG660467190

Comments: As Grown - No indication of post-growth treatment.

This Laboratory Grown Diamond was created by High Pressure High Temperature (HPHT) growth process.  
Type II



<b>October 20, 2024</b>	<b>GI Report No. LGSA0467190</b>	<b>1.91 CARAT</b>	<b>D</b>
<b>CUSHION BRILLIANT</b>	<b>Carat Weight</b>	<b>Vs1</b>	<b>Patched</b>
<b>35.35 X 6.72 X 4.37 MM</b>	<b>Color Grade</b>	<b>GSI</b>	<b>EXCELLENT</b>
	<b>Clarity</b>	<b>I1</b>	<b>EXCELLENT</b>
	<b>Depth</b>	<b>65%</b>	<b>NONE</b>
	<b>Table</b>	<b>64%</b>	<b>Fluorescence(s)</b>
	<b>Grades</b>	<b>Medium To Thick Faceted</b>	<b>sell LGSA0467190</b>

**Comments:**  
As Grown - No indication of post-growth treatment.

THIS DOCUMENT WAS PRODUCED WITH THE FOLLOWING SECURITY MEASURES: SPECIAL DOCUMENT PAPER, INK SCREENS, WATERMARK, BACKGROUND DESIGNS, HOLOGRAM AND OTHER SECURITY FEATURES NOT LISTED AND DO EXCEED DOCUMENT SECURITY INDUSTRY GUIDELINE