



ELECTRONIC COPY

LABORATORY GROWN DIAMOND REPORT

October 26, 2024  
 IGI Report Number **LG660466618**  
 Description **LABORATORY GROWN DIAMOND**  
 Shape and Cutting Style **ROUND BRILLIANT**  
 Measurements **7.10 - 7.14 X 4.29 MM**

**GRADING RESULTS**

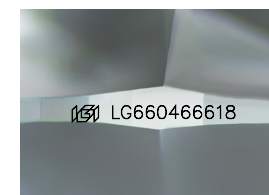
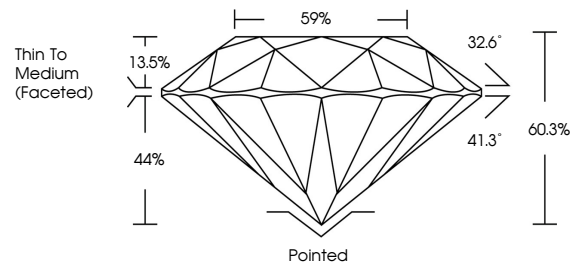
Carat Weight **1.31 CARAT**  
 Color Grade **FANCY VIVID GREEN**  
 Clarity Grade **VS 1**  
 Cut Grade **EXCELLENT**

ADDITIONAL GRADING INFORMATION

Polish **VERY GOOD**  
 Symmetry **VERY GOOD**  
 Fluorescence **VERY SLIGHT**  
 Inscription(s) **IGI LG660466618**

Comments: This Laboratory Grown Diamond was created by Chemical Vapor Deposition (CVD) growth process.  
 Indications of post-growth treatment.

PROPORTIONS



Sample Image Used

COLOR

D	E	F	G	H	I	J	Faint	Very Light	Light
---	---	---	---	---	---	---	-------	------------	-------

CLARITY

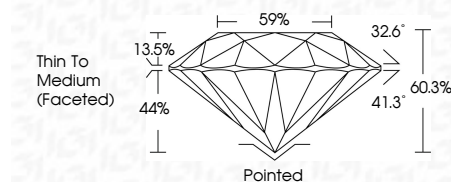
IF	VS <sup>1-2</sup>	VS <sup>1-2</sup>	SI <sup>1-2</sup>	I <sup>1-3</sup>
Internally Flawless	Very Very Slightly Included	Very Slightly Included	Slightly Included	Included



October 26, 2024  
 IGI Report Number **LG660466618**  
 Description **LABORATORY GROWN DIAMOND**  
 Shape and Cutting Style **ROUND BRILLIANT**  
 Measurements **7.10 - 7.14 X 4.29 MM**

**GRADING RESULTS**

Carat Weight **1.31 CARAT**  
 Color Grade **FANCY VIVID GREEN**  
 Clarity Grade **VS 1**  
 Cut Grade **EXCELLENT**



ADDITIONAL GRADING INFORMATION

Polish **VERY GOOD**  
 Symmetry **VERY GOOD**  
 Fluorescence **VERY SLIGHT**  
 Inscription(s) **IGI LG660466618**

Comments: This Laboratory Grown Diamond was created by Chemical Vapor Deposition (CVD) growth process.  
 Indications of post-growth treatment.



October 26, 2024  
 IGI Report No LG660466618  
**ROUND BRILLIANT**  
 7.10 - 7.14 X 4.29 MM  
 1.31 CARAT  
 FANCY VIVID GREEN  
 VS 1  
 EXCELLENT  
 60.3%  
 59%  
 Thin To Medium (Faceted)  
 Pointed  
 VERY GOOD  
 VERY GOOD  
 VERY SLIGHT  
 IGI LG660466618

Comments: This Laboratory Grown Diamond was created by Chemical Vapor Deposition (CVD) growth process.  
 Indications of post-growth treatment.