



ELECTRONIC COPY

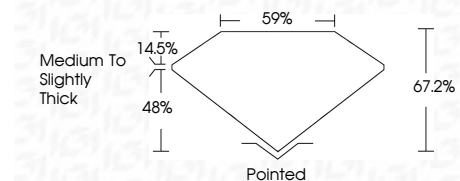
LG660465489
Report verification at igi.org



November 21, 2024
IGI Report Number **LG660465489**
Description **LABORATORY GROWN DIAMOND**
Shape and Cutting Style **CUT CORNERED
RECTANGULAR MODIFIED
BRILLIANT**
Measurements **8.11 X 5.58 X 3.75 MM**

GRADING RESULTS

Carat Weight **1.59 CARAT**
Color Grade **FANCY YELLOW**
Clarity Grade **VS 1**



ADDITIONAL GRADING INFORMATION

Polish **EXCELLENT**
Symmetry **EXCELLENT**
Fluorescence **NONE**
Inscription(s) **IGI LG660465489**
Comments: This Laboratory Grown Diamond was created by Chemical Vapor Deposition (CVD) growth process.



November 21, 2024
IGI Report No **LG660465489**
CUT CORNERED RECT. MODIFIED BRILLIANT
8.11 X 5.58 X 3.75 MM
Carat Weight **1.59 CARAT**
Color Grade **FANCY YELLOW**
Clarity Grade **VS 1**
Depth **67.2%**
Table **48%**
Girdle **Medium to Slightly Thick**
Culet **Pointed**
Polish **EXCELLENT**
Symmetry **EXCELLENT**
Fluorescence **NONE**
Inscription(s) **IGI LG660465489**
Comments: This Laboratory Grown Diamond was created by Chemical Vapor Deposition (CVD) growth process.

November 21, 2024
IGI Report Number **LG660465489**
Description **LABORATORY GROWN DIAMOND**
Shape and Cutting Style **CUT CORNERED RECTANGULAR
MODIFIED BRILLIANT**
Measurements **8.11 X 5.58 X 3.75 MM**

GRADING RESULTS

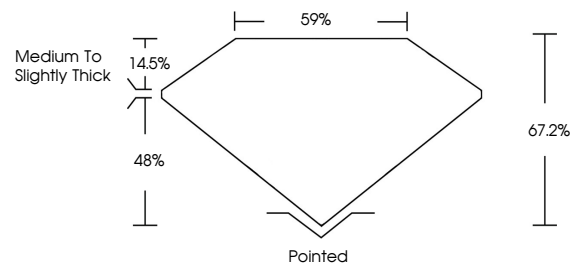
Carat Weight **1.59 CARAT**
Color Grade **FANCY YELLOW**
Clarity Grade **VS 1**

ADDITIONAL GRADING INFORMATION

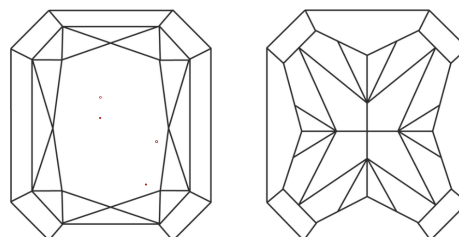
Polish **EXCELLENT**
Symmetry **EXCELLENT**
Fluorescence **NONE**
Inscription(s) **IGI LG660465489**

Comments: This Laboratory Grown Diamond was created by Chemical Vapor Deposition (CVD) growth process.

PROPORTIONS

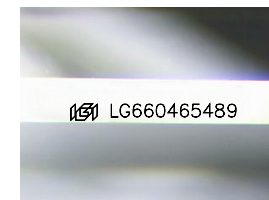


CLARITY CHARACTERISTICS



KEY TO SYMBOLS

Red symbols indicate internal characteristics.
Green symbols indicate external characteristics.



Sample Image Used

COLOR

D E F G H I J Faint Very Light Light

CLARITY

IF	WS ¹⁻²	VS ¹⁻²	SI ¹⁻²	I ¹⁻³
Internally Flawless	Very Very Slightly Included	Very Slightly Included	Slightly Included	Included

